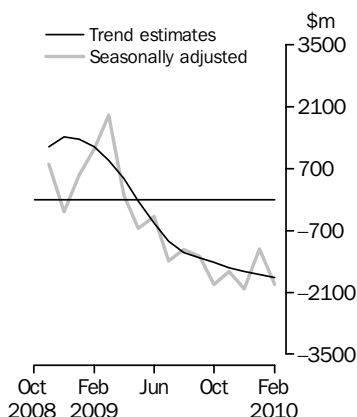


INTERNATIONAL TRADE IN GOODS AND SERVICES

AUSTRALIA

EMBARGO: 11.30AM (CANBERRA TIME) THURS 1 APR 2010

Balance on Goods and Services



KEY FIGURES

	Dec 2009	Jan 2010	Feb 2010	Jan 10 to Feb 10 %
	\$m	\$m	\$m	change
BALANCE ON GOODS AND SERVICES				
Trend estimates	-1 635	-1 695	-1 769	..
Seasonally adjusted	-2 021	-1 120	-1 924	..
CREDITS (Exports of goods & services)				
Trend estimates	19 787	19 888	19 982	—
Seasonally adjusted	20 006	20 209	19 922	-1
DEBITS (Imports of goods & services)				
Trend estimates	21 422	21 583	21 752	1
Seasonally adjusted	22 027	21 329	21 845	2

.. not applicable

— nil or rounded to zero (including null cells)

KEY POINTS

BALANCE ON GOODS AND SERVICES

- The trend estimate of the *balance on goods and services* was a deficit of \$1,769m in February 2010, an increase of \$74m on the revised deficit in January 2010.
- In seasonally adjusted terms, the *balance on goods and services* was a deficit of \$1,924m in February 2010, an increase of \$804m on the revised deficit in January 2010.

CREDITS (EXPORTS OF GOODS & SERVICES)

- Seasonally adjusted, *goods and services credits* fell \$287m (1%) to \$19,922m. *Non-monetary gold* fell \$349m (28%) and *non-rural goods* fell \$25m. *Rural goods* rose \$45m (2%) and *services credits* rose \$42m (1%).

DEBITS (IMPORTS OF GOODS & SERVICES)

- Seasonally adjusted, *goods and services debits* rose \$516m (2%) to \$21,845m. *Consumption goods* rose \$263m (5%) with the *non-industrial transport equipment* component up \$210m (16%), *non-monetary gold* rose \$116m (33%) and *capital goods* rose \$65m (2%). *Intermediate and other merchandise goods* fell \$57m (1%) and *services debits* rose \$129m (3%).

INQUIRIES

For further information contact Selvi Sekhar on Canberra (02) 6252 5540 for Goods, and Karen McGuigan on Canberra (02) 6252 5415 for Services.

NOTES

FORTHCOMING ISSUES

ISSUE	RELEASE DATE
March 2010	6 May 2010
April 2010	3 June 2010
May 2010	6 July 2010
June 2010	4 August 2010
July 2010	2 September 2010
August 2010	5 October 2010



REVISIONS

Table 17 summarises revisions, in original current price terms, since the last issue of this publication, for the last three financial years and last six months.

Revisions have been made to incorporate the latest available data relating to merchandise trade and international trade in services. In original terms, these revisions have:

- increased the deficit on goods and services for January 2010 by \$83m
- decreased the surplus on goods and services for 2008-09 by \$339m.

Seasonally adjusted and trend series are revised due to the incorporation of revised estimates, incorporation of estimates for the latest month and the rederivation of seasonal factors under the concurrent seasonal adjustment methodology.

RELATED PUBLICATION

The publication *Characteristics of Australian Exporters, 2008-09* (cat. no. 5368.0.55.006) will be released on 9 April 2010 (it was previously scheduled to be released on 26 March 2010.). This publication will analyse the number and characteristics of Australia's exporters. Estimates of exporters of merchandise trade are compiled from data sourced from the Australian Customs and Border Protection Service and from the Australian Taxation Office's Australian Business Register. Estimates of exporters of services are compiled largely from the ABS Survey of International Trade in Services.

Brian Pink
Australian Statistician

CONTENTS

page

Time series data	4
----------------------------	---

ANALYSIS

Analysis and comments	5
---------------------------------	---

TABLES

INTERNATIONAL TRADE IN GOODS AND SERVICES – BALANCE OF PAYMENTS BASIS

1 Goods and services, summary, seasonally adjusted and trend estimates	10
2 Goods and services, summary, original	11
3 Goods credits, original	12
4 Goods debits, original	13
5 Goods credits, seasonally adjusted	14
6 Goods debits, seasonally adjusted	15
7 Goods credits, trend estimates	16
8 Goods debits, trend estimates	17
9 Services, summary, original	18
10 Services, summary, seasonally adjusted and trend estimates	19
11 Services, original, quarterly	20

INTERNATIONAL MERCHANDISE TRADE – RECORDED TRADE BASIS

12 International merchandise exports, by commodity	21
13 International merchandise imports, by commodity	24
14 International merchandise trade, by country and country groups	27
15 International merchandise trade, by state	28

OTHER TABLES

16 Period average exchange rates per Australian dollar	29
17 Summary of revisions, goods and services, original	30

OTHER INFORMATION

Explanatory Notes	31
Appendix – Related articles	37

TIME SERIES DATA

TIME SERIES DATA

Data is available free on the ABS website include longer time series of tables in this publication and the additional spreadsheets and data cubes listed below.

- 31 Merchandise exports by Broad Economic Category (BEC)
- 32a Merchandise exports, Industry (ANZSIC 2006), FOB Value
- 32b Merchandise exports, Industry (ANZSIC 1993), FOB Value
- 33 Merchandise imports by Broad Economic Category (BEC)
- 34 Merchandise imports by Balance of Payments Broad Economic Category (BoPBEC)
- 35a Merchandise imports, Industry (ANZSIC 2006), Customs Value
- 35b Merchandise imports, Industry (ANZSIC 1993), Customs Value
- 36 Merchandise exports, state by country and country groups
- 37 Merchandise imports, state by country and country groups
- 91 Monthly seasonal adjustment factors and forward factors for 12 months.

TRADE IN SERVICES DATA CUBES

Calendar year data cubes (cat. no. 5368.0.55.004) are updated after the March issue of this publication (cat. no. 5368.0). These data cubes will be released on 14 May 2010.

Financial year data cubes (cat. no. 5368.0.55.003) are updated after the September issue of this publication (cat. no. 5368.0).

The following tables are included in both sets of data cubes:

- 1 International trade in services, credits, state by year
- 2 International trade in services, credits, year by state
- 3 International trade in services, debits, state by year
- 4 International trade in services, debits, year by state
- 5 International trade in services, credits, year by country and service
- 6 International trade in services, credits, service by year and by country
- 7 International trade in services, debits, year by country and service
- 8 International trade in services, debits, service by year and by country
- 10 International trade in services, credits, year by country and travel service
- 11 International trade in services, debits, year by country and travel service
- 12 International trade in services, credits, education related travel, by educational sector, by type of expenditure by year.

ANALYSIS AND COMMENTS

BALANCE ON GOODS AND SERVICES

The trend estimate of the balance on goods and services was a deficit of \$1,769m in February 2010, an increase of \$74m on the deficit in January 2010.

In seasonally adjusted terms, the balance on goods and services was a deficit of \$1,924m in February 2010, an increase of \$804m on the deficit in January 2010.

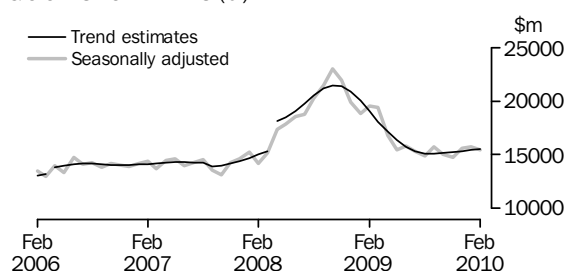
EXPORTS OF GOODS AND SERVICES

Between January 2010 and February 2010 the trend estimate of goods and services credits rose \$94m to \$19,982m.

In seasonally adjusted terms, goods and services credits fell \$287m (1%) to \$19,922m. Non-monetary gold fell \$349m (28%) and non-rural goods fell \$25m. Rural goods rose \$45m (2%) and services credits rose \$42m (1%).

Exports of goods

GOODS CREDITS (a)



(a) Trend breaks of \$500m to April 2006 and \$2,725m to April 2008 have been applied.

RURAL GOODS

In trend terms, exports of rural goods rose \$36m (2%) to \$2,092m.

In seasonally adjusted terms, exports of rural goods rose \$45m (2%) to \$2,131m.

The main component contributing to the rise in the seasonally adjusted estimates was other rural, up \$86m (9%).

Partly offsetting this increase was the cereal grains and cereal preparations component, down \$42m (9%).

NON-RURAL GOODS

In trend terms, exports of non-rural goods rose \$91m (1%) to \$12,355m.

In seasonally adjusted terms, exports of non-rural goods fell \$25m to \$12,388m.

The main component contributing to the fall in the seasonally adjusted estimates was coal, coke and briquettes, down \$317m (12%).

Partly offsetting this decrease was the other mineral fuels component, up \$145m (10%).

NET EXPORTS OF GOODS UNDER MERCHANTING

In trend terms, net exports of goods under merchanting fell \$1m (6%) to \$17m.

In seasonally adjusted terms, net exports of goods under merchanting remained steady at \$23m.

ANALYSIS AND COMMENTS *continued*

Exports of goods *continued*

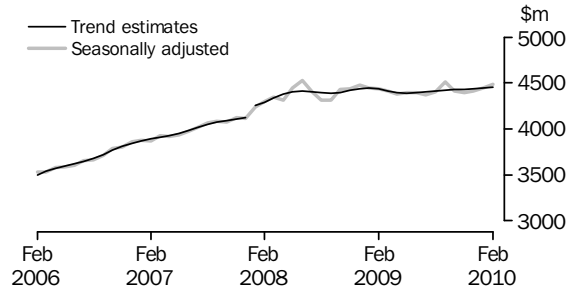
NON-MONETARY GOLD

In trend terms, exports of non-monetary gold fell \$40m (4%) to \$1,067m.

In seasonally adjusted terms, non-monetary gold fell \$349m (28%) to \$891m.

Exports of services

SERVICES CREDITS (a)



(a) A trend break of \$106m has been applied to January 2008.

In trend terms, services credits rose \$7m to \$4,451m.

In seasonally adjusted terms, services credits rose \$42m (1%) to \$4,489m.

The main component contributing to the rise in the seasonally adjusted estimates was travel services, up \$43m (2%).

In seasonally adjusted terms, tourism related services credits rose \$42m (1%) to \$3,030m.

IMPORTS OF GOODS AND SERVICES

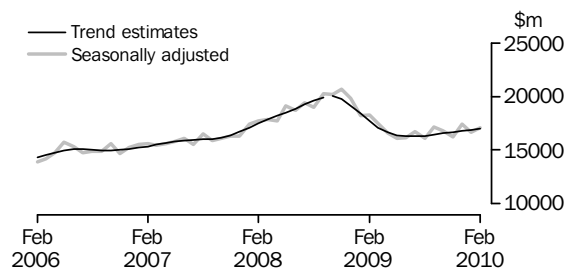
Between January 2010 and February 2010 the trend estimate of goods and services debits rose \$169m (1%) to \$21,752m.

In seasonally adjusted terms, goods and services debits rose \$516m (2%) to \$21,845m.

Consumption goods rose \$263m (5%), non-monetary gold rose \$116m (33%) and capital goods rose \$65m (2%). Intermediate and other merchandise goods fell \$57m (1%) and services debits rose \$129m (3%).

Imports of goods

GOODS DEBITS (a)



(a) A trend break of \$167m has been applied to Capital goods n.e.s. debits and related aggregates in October 2008.

ANALYSIS AND COMMENTS *continued*

Imports of goods continued

CONSUMPTION GOODS

In trend terms, imports of consumption goods rose \$60m (1%) to \$5,195m.

In seasonally adjusted terms, imports of consumption goods rose \$263m (5%) to \$5,366m.

The main component contributing to the rise in the seasonally adjusted estimates was non-industrial transport equipment, up \$210m (16%).

CAPITAL GOODS

In trend terms, imports of capital goods rose \$57m (1%) to \$4,001m.

In seasonally adjusted terms, imports of capital goods rose \$65m (2%) to \$4,017m.

The main components contributing to the rise in the seasonally adjusted estimates were:

- machinery and industrial equipment, up \$255m (23%)
- industrial transport equipment n.e.s., up \$91m (18%).

Partly offsetting these rises were:

- capital goods, n.e.s., down \$248m (21%)
- telecommunications equipment, down \$56m (11%).

INTERMEDIATE AND OTHER MERCHANDISE GOODS

In trend terms, imports of intermediate and other merchandise goods rose \$54m (1%) to \$7,371m.

In seasonally adjusted terms, imports of intermediate and other merchandise goods fell \$57m (1%) to \$7,208m.

The main components contributing to the fall in the seasonally adjusted estimates were:

- other merchandise goods, down \$129m (66%)
- other parts for capital goods, down \$91m (8%).

Partly offsetting these falls was the fuels and lubricants component, up \$148m (8%). In original terms on a merchandise trade basis, crude petroleum increased \$56m (5%) with volumes up 8% and prices down 3%. Refined petroleum increased \$94m (14%) with volumes up 17% and prices down 3%.

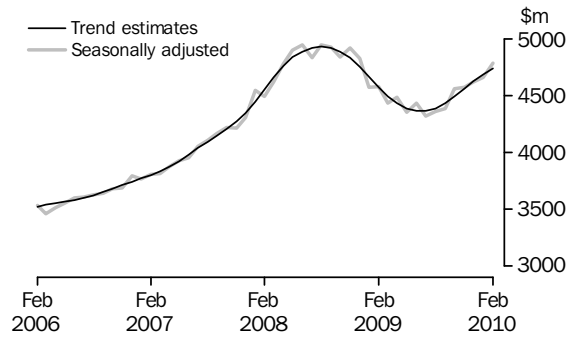
NON-MONETARY GOLD

In trend terms, imports of non-monetary gold fell \$51m (10%) to \$450m.

In seasonally adjusted terms, non-monetary gold debits rose \$116m (33%) to \$467m.

Imports of services

SERVICES DEBITS



In trend terms, services debits rose \$48m (1%) to \$4,735m.

In seasonally adjusted terms, services debits rose \$129m (3%) to \$4,788m.

The components contributing to the rise in the seasonally adjusted estimates were:

- transport services, up \$41m (4%)
- maintenance and repair services n.i.e., up \$38m
- other services, up \$31m (2%)
- travel services, up \$20m (1%).

In seasonally adjusted terms, tourism related services debits rose \$27m (1%) to \$2,522m.

GOODS AND SERVICES (a), Summary—Seasonally Adjusted and Trend Estimates

	Mar 2009	Apr 2009	May 2009	Jun 2009	Jul 2009	Aug 2009	Sep 2009	Oct 2009	Nov 2009	Dec 2009	Jan 2010	Feb 2010
	\$m	\$m	\$m	\$m	\$m	\$m	\$m	\$m	\$m	\$m	\$m	\$m
SEASONALLY ADJUSTED												
BALANCE												
On goods and services	1 909	99	-660	-385	-1 395	-1 132	-1 293	-1 922	-1 629	-2 021	-1 120	-1 924
CREDITS												
Total goods and services	23 818	21 144	19 811	20 197	19 679	19 315	20 241	19 445	19 146	20 006	20 209	19 922
Total goods	19 406	16 761	15 419	15 800	15 308	14 914	15 727	15 034	14 752	15 591	15 762	15 432
Rural goods(b)	2 759	2 432	2 305	2 316	2 199	2 109	2 022	1 849	1 967	2 096	2 086	2 131
Non-rural goods(b)	14 500	12 979	12 111	12 318	12 235	11 930	12 285	12 015	11 645	12 403	12 413	12 388
Net exports of goods under merchandise(c)	38	25	25	25	39	39	41	15	15	15	23	23
Non-monetary gold(c)	2 109	1 325	978	1 141	835	836	1 378	1 155	1 125	1 076	1 240	891
Total services	4 413	4 383	4 392	4 397	4 371	4 400	4 515	4 411	4 394	4 416	4 447	4 489
DEBITS												
Total goods and services	-21 910	-21 045	-20 471	-20 582	-21 073	-20 447	-21 534	-21 367	-20 775	-22 027	-21 329	-21 845
Total goods	-17 475	-16 562	-16 119	-16 147	-16 751	-16 087	-17 151	-16 809	-16 201	-17 411	-16 671	-17 057
Consumption goods	-5 133	-5 056	-5 029	-5 173	-5 236	-4 925	-5 097	-5 034	-5 064	-4 981	-5 103	-5 366
Capital goods	-4 237	-3 792	-3 538	-3 676	-3 840	-3 925	-3 996	-4 060	-3 749	-4 005	-3 952	-4 017
Intermediate and other merchandise goods	-7 042	-7 129	-6 668	-6 952	-7 419	-6 681	-7 321	-7 043	-6 947	-7 759	-7 265	-7 208
Non-monetary gold(c)	-1 063	-584	-884	-346	-255	-555	-737	-672	-441	-665	-351	-467
Total services	-4 435	-4 483	-4 352	-4 435	-4 323	-4 360	-4 383	-4 558	-4 574	-4 616	-4 659	-4 788
TREND ESTIMATES (d)												
BALANCE												
On goods and services	890	464	-35	-542	-948	-1 200	-1 326	-1 432	-1 544	-1 635	-1 695	-1 769
CREDITS												
Total goods and services	22 474	21 548	20 760	20 118	19 685	19 509	19 546	19 630	19 699	19 787	19 888	19 982
Total goods	18 058	17 151	16 370	15 723	15 280	15 095	15 124	15 203	15 268	15 351	15 444	15 532
Rural goods(b)	2 532	2 476	2 397	2 290	2 177	2 079	2 020	1 996	2 000	2 023	2 056	2 092
Non-rural goods(b)	13 831	13 149	12 662	12 309	12 080	11 985	12 004	12 053	12 104	12 178	12 264	12 355
Net exports of goods under merchandise	30	33	33	33	33	32	30	26	22	19	18	17
Non-monetary gold	1 665	1 493	1 278	1 091	990	998	1 071	1 128	1 143	1 131	1 107	1 067
Total services	4 415	4 397	4 391	4 394	4 405	4 415	4 422	4 427	4 431	4 436	4 444	4 451
DEBITS												
Total goods and services	-21 584	-21 084	-20 795	-20 659	-20 633	-20 709	-20 872	-21 062	-21 243	-21 422	-21 583	-21 752
Total goods	-17 092	-16 654	-16 408	-16 293	-16 266	-16 322	-16 440	-16 568	-16 682	-16 795	-16 897	-17 017
Consumption goods	-4 985	-4 997	-5 044	-5 094	-5 114	-5 088	-5 052	-5 042	-5 054	-5 089	-5 135	-5 195
Capital goods	-3 989	-3 865	-3 769	-3 706	-3 681	-3 693	-3 735	-3 784	-3 832	-3 888	-3 944	-4 001
Intermediate and other merchandise goods	-7 080	-6 939	-6 922	-6 950	-6 989	-7 039	-7 102	-7 167	-7 224	-7 277	-7 317	-7 371
Non-monetary gold	-1 038	-854	-673	-542	-482	-501	-551	-575	-571	-541	-501	-450
Total services	-4 492	-4 430	-4 387	-4 367	-4 367	-4 388	-4 433	-4 494	-4 562	-4 627	-4 687	-4 735
(a)	For sign conventions, see paragraph 15 of the Explanatory Notes.					(d)						
(b)	For all time periods, estimates for sugar, sugar preparations and honey are included in Non-rural goods.					Caution should be used when interpreting recent trend estimates as they may be affected by unusual economic factors. For more details on trend estimates, please see paragraph 19 of the explanatory notes.						
(c)	This component is not seasonally adjusted.											

GOODS AND SERVICES (a), Summary—Original

	Mar 2009	Apr 2009	May 2009	Jun 2009	Jul 2009	Aug 2009	Sep 2009	Oct 2009	Nov 2009	Dec 2009	Jan 2010	Feb 2010
	\$m	\$m	\$m	\$m	\$m	\$m	\$m	\$m	\$m	\$m	\$m	\$m
BALANCE												
On goods and services	2 733	293	564	-619	-1 775	-263	-2 385	-2 574	-2 692	-1 947	-1 857	-611
CREDITS												
Total goods and services	24 498	20 736	19 975	19 644	19 756	19 759	20 322	20 415	19 017	20 845	18 752	19 145
Total goods	19 920	16 244	15 684	15 586	15 349	15 253	15 990	15 815	14 605	16 493	14 415	14 575
Rural goods(b)	2 986	2 492	2 487	2 223	2 129	2 085	1 979	1 888	1 900	2 203	1 857	2 127
Non-rural goods(b)	14 787	12 402	12 194	12 197	12 346	12 293	12 592	12 757	11 565	13 199	11 295	11 534
Net exports of goods under merchanting	38	25	25	25	39	39	41	15	15	15	23	23
Non-monetary gold	2 109	1 325	978	1 141	835	836	1 378	1 155	1 125	1 076	1 240	891
Total services	4 578	4 492	4 291	4 058	4 407	4 506	4 332	4 600	4 412	4 352	4 337	4 570
DEBITS												
Total goods and services	-21 765	-20 443	-19 411	-20 263	-21 531	-20 022	-22 707	-22 989	-21 709	-22 792	-20 609	-19 756
Total goods	-17 554	-16 055	-15 278	-15 805	-16 997	-15 755	-18 028	-18 113	-17 275	-17 909	-15 663	-15 592
Consumption goods	-4 944	-4 730	-4 542	-4 927	-5 410	-4 919	-5 568	-5 783	-5 599	-5 074	-4 598	-4 870
Capital goods	-4 370	-3 617	-3 449	-3 759	-3 851	-3 739	-4 183	-4 265	-4 178	-4 267	-3 604	-3 474
Intermediate and other merchandise goods	-7 177	-7 124	-6 403	-6 773	-7 481	-6 542	-7 540	-7 393	-7 057	-7 903	-7 110	-6 781
Non-monetary gold	-1 063	-584	-884	-346	-255	-555	-737	-672	-441	-665	-351	-467
Total services	-4 211	-4 388	-4 133	-4 458	-4 534	-4 267	-4 679	-4 876	-4 434	-4 883	-4 946	-4 164

(a) For sign conventions, see paragraph 15 of the Explanatory Notes.

(b) For all time periods, estimates for sugar, sugar preparations and honey are included in Non-rural goods.

							8 MONTHS ENDED FEBRUARY		Change %
	2006-07	2007-08	2008-09	Dec 2009	Jan 2010	Feb 2010	2009	2010	
	\$m	\$m	\$m	\$m	\$m	\$m	\$m	\$m	
Total goods credits	169 524	182 952	231 471	16 493	14 415	14 575	164 037	122 495	-25.3
General merchandise	158 570	170 471	213 662	15 402	13 152	13 661	151 894	113 749	-25.1
<i>Rural goods(a)</i>	25 090	25 494	29 383	2 203	1 857	2 127	19 195	16 168	-15.8
Meat and meat preparations	7 080	6 542	7 454	550	323	453	5 048	3 988	-21.0
Cereal grains and cereal preparations	4 171	4 975	6 881	384	489	482	4 070	3 335	-18.1
Wool and sheepskins	3 065	2 796	2 322	203	139	232	1 571	1 403	-10.7
Other rural(a)	10 774	11 181	12 726	1 066	906	960	8 506	7 442	-12.5
<i>Non-rural goods(a)</i>	133 480	144 977	184 279	13 199	11 295	11 534	132 699	97 581	-26.5
Metal ores and minerals	35 315	41 339	51 922	4 053	3 609	3 786	36 420	29 799	-18.2
Coal, coke and briquettes	21 928	24 599	54 957	3 004	2 773	2 213	41 021	22 124	-46.1
Other mineral fuels	15 641	18 889	20 707	1 588	1 412	1 479	15 711	11 729	-25.3
Metals (excl. non-monetary gold)	14 821	14 039	12 394	935	807	804	8 910	6 748	-24.3
Machinery	8 391	8 750	8 900	698	475	632	6 118	5 218	-14.7
Transport equipment	4 651	5 723	5 090	375	187	362	4 003	2 688	-32.9
Other manufactures	16 241	16 965	17 601	1 350	1 032	1 258	11 934	10 772	-9.7
Other non-rural (incl. sugar and beverages)	15 113	13 126	11 077	1 077	878	885	7 366	7 600	3.2
Goods procured in ports by carriers	1 379	1 547	1 631	119	122	115	1 216	903	-25.7
Net exports of goods under merchanting	214	209	301	15	23	23	188	210	11.7
Goods acquired under merchanting									
(negative exports)	-1 303	-1 528	-2 386	-182	-151	-151	-1 759	-1 216	30.9
Goods sold under merchanting	1 517	1 737	2 687	197	174	174	1 947	1 426	-26.8
Non-monetary gold	10 740	12 272	17 508	1 076	1 240	891	11 955	8 536	-28.6

(a) For all time periods, estimates for sugar, sugar preparations and honey are included in Other non-rural.

GOODS DEBITS(a), Original

							8 MONTHS		Change
							ENDED FEBRUARY		
	2006-07	2007-08	2008-09	Dec 2009	Jan 2010	Feb 2010	2009	2010	
	\$m	\$m	\$m	\$m	\$m	\$m	\$m	\$m	%
Total goods debits	-183 572	-204 846	-222 378	-17 909	-15 663	-15 592	-157 686	-135 332	14.2
General merchandise	-178 261	-197 253	-210 856	-17 244	-15 312	-15 125	-149 041	-131 189	12.0
Consumption goods	-54 913	-59 371	-61 419	-5 074	-4 598	-4 870	-42 276	-41 821	1.1
Food and beverages, mainly for consumption	-7 182	-7 840	-8 857	-823	-671	-610	-6 093	-6 013	1.3
Household electrical items	-4 525	-5 051	-5 488	-475	-334	-350	-3 701	-3 894	-5.2
Non-industrial transport equipment	-14 894	-16 872	-13 247	-1 422	-1 164	-1 327	-9 505	-10 198	-7.3
Textiles, clothing and footwear	-6 805	-7 051	-8 287	-442	-746	-745	-5 784	-5 170	10.6
Toys, books and leisure goods	-4 328	-4 561	-5 277	-326	-261	-300	-3 608	-3 253	9.8
Consumption goods n.e.s.	-17 179	-17 996	-20 263	-1 586	-1 422	-1 538	-13 585	-13 293	2.1
Capital goods	-41 774	-45 299	-51 457	-4 267	-3 604	-3 474	-36 262	-31 561	13.0
Machinery and industrial equipment	-15 330	-16 480	-18 488	-1 320	-1 103	-1 174	-12 878	-10 317	19.9
ADP equipment	-7 008	-7 074	-7 257	-653	-561	-541	-4 852	-4 704	3.1
Telecommunications equipment	-5 315	-5 790	-6 431	-519	-370	-353	-4 258	-3 951	7.2
Civil aircraft(b)	-1 667	-2 691	na	na	na	na	na	na	na
Industrial transport equipment n.e.s.	-6 463	-7 502	-6 527	-562	-476	-553	-5 143	-4 115	20.0
Capital goods n.e.s.(b)	-5 991	-5 762	-11 230	-1 213	-1 094	-853	-7 607	-8 474	-11.4
Intermediate and other merchandise goods	-81 574	-92 583	-97 980	-7 903	-7 110	-6 781	-70 503	-57 807	18.0
Food and beverages, mainly for industry	-819	-923	-1 186	-91	-68	-73	-830	-679	18.2
Primary industrial supplies n.e.s.	-1 552	-1 477	-1 901	-175	-88	-96	-1 473	-879	40.3
Fuels and lubricants	-21 470	-29 772	-28 213	-2 624	-1 935	-2 083	-20 930	-17 204	17.8
Parts for transport equipment	-8 355	-8 837	-8 599	-672	-685	-655	-6 135	-5 408	11.9
Parts for ADP equipment	-1 620	-1 115	-1 067	-87	-87	-78	-713	-624	12.5
Other parts for capital goods	-11 780	-11 990	-14 312	-1 307	-1 116	-946	-9 468	-9 192	2.9
Organic and inorganic chemicals	-4 406	-4 673	-5 384	-380	-379	-347	-3 886	-2 854	26.6
Paper and paperboard	-2 368	-2 359	-2 403	-183	-189	-180	-1 752	-1 536	12.3
Textile yarn and fabrics	-1 366	-1 334	-1 344	-86	-92	-91	-944	-807	14.5
Iron and steel	-3 817	-3 721	-5 528	-246	-244	-281	-4 360	-2 056	52.8
Plastics	-2 957	-3 064	-3 028	-223	-210	-206	-2 181	-1 782	18.3
Processed industrial supplies n.e.s.	-17 997	-20 132	-21 919	-1 644	-1 684	-1 541	-15 533	-13 044	16.0
Other merchandise goods(b)	-1 619	-1 415	-1 516	-80	-195	-66	-1 063	-800	24.7
Goods procured in ports by carriers	-1 448	-1 771	-1 580	-105	-138	-138	-1 235	-942	23.7
Non-monetary gold	-5 311	-7 593	-11 522	-665	-351	-467	-8 645	-4 143	52.1

na not available

(a) For sign conventions, see paragraph 15 of the Explanatory Notes.

(b) From December 2008, the Civil aircraft series and commodities subject to a 'no commodity details' or 'no value details' restriction are included in Capital goods n.e.s.. From September to November 2008 commodities with these restrictions are included in Civil aircraft and for earlier periods are included in Other merchandise goods.

GOODS CREDITS, Seasonally Adjusted

	May 2009	Jun 2009	Jul 2009	Aug 2009	Sep 2009	Oct 2009	Nov 2009	Dec 2009	Jan 2010	Feb 2010
	\$m	\$m	\$m	\$m	\$m	\$m	\$m	\$m	\$m	\$m
Total goods credits	15 419	15 800	15 308	14 914	15 727	15 034	14 752	15 591	15 762	15 432
General merchandise	14 416	14 634	14 434	14 039	14 308	13 864	13 612	14 500	14 499	14 518
<i>Rural goods</i>	2 305	2 316	2 199	2 109	2 022	1 849	1 967	2 096	2 086	2 131
Meat and meat preparations	583	559	553	548	503	498	475	498	488	472
Cereal grains and cereal preparations	547	631	503	489	433	375	414	399	458	416
Wool and sheepskins	168	163	158	160	163	181	206	189	193	209
Other rural (a)	1 007	964	984	911	924	794	873	1 011	947	1 033
<i>Non-rural goods</i>	12 111	12 318	12 235	11 930	12 285	12 015	11 645	12 403	12 413	12 388
Metal ores and minerals	3 671	3 624	3 656	3 648	3 726	3 491	3 694	3 661	3 921	3 979
Coal, coke and briquettes(b)	3 031	3 136	3 025	2 767	3 027	2 675	2 565	2 949	2 723	2 406
Other mineral fuels(c)	1 286	1 355	1 354	1 322	1 256	1 473	1 354	1 505	1 445	1 590
Metals (excl. non-monetary gold)(c)	840	862	821	859	843	907	728	917	891	902
Machinery	660	689	671	644	670	651	642	639	644	662
Transport equipment	210	271	302	343	325	324	340	310	335	384
Other manufactures	1 395	1 398	1 391	1 368	1 345	1 353	1 330	1 338	1 334	1 348
Other non-rural (incl. sugar and beverages)	917	884	907	879	984	1 037	881	967	1 001	998
Goods procured in ports by carriers(c)	100	99	108	101	110	105	110	117	119	118
Net exports of goods under merchanting(d)	25	25	39	39	41	15	15	15	23	23
Non-monetary gold(d)	978	1 141	835	836	1 378	1 155	1 125	1 076	1 240	891

(a) For all time periods, estimates for sugar, sugar preparations and honey are included in Other non-rural.

(b) Only a length-of-month adjustment has been applied to this component.

(c) In using these seasonally adjusted series, care should be exercised because of the difficulties associated with reliably estimating the seasonal pattern.

(d) This component is not seasonally adjusted.

GOODS DEBITS(a), Seasonally Adjusted

	May 2009	Jun 2009	Jul 2009	Aug 2009	Sep 2009	Oct 2009	Nov 2009	Dec 2009	Jan 2010	Feb 2010
	\$m	\$m	\$m	\$m	\$m	\$m	\$m	\$m	\$m	\$m
Total goods debits	-16 119	-16 147	-16 751	-16 087	-17 151	-16 809	-16 201	-17 411	-16 671	-17 057
General merchandise	-15 235	-15 801	-16 496	-15 532	-16 414	-16 137	-15 760	-16 746	-16 320	-16 590
Consumption goods	-5 029	-5 173	-5 236	-4 925	-5 097	-5 034	-5 064	-4 981	-5 103	-5 366
Food and beverages, mainly for consumption	-729	-754	-780	-757	-734	-730	-684	-717	-709	-704
Household electrical items	-527	-535	-514	-505	-475	-419	-468	-469	-435	-438
Non-industrial transport equipment	-904	-1 083	-1 117	-1 031	-1 237	-1 276	-1 332	-1 330	-1 342	-1 552
Textiles, clothing and footwear	-672	-663	-673	-629	-622	-594	-579	-500	-643	-632
Toys, books and leisure goods	-459	-436	-431	-420	-392	-399	-386	-362	-352	-379
Consumption goods n.e.s.	-1 737	-1 701	-1 721	-1 583	-1 636	-1 617	-1 615	-1 605	-1 623	-1 662
Capital goods	-3 538	-3 676	-3 840	-3 925	-3 996	-4 060	-3 749	-4 005	-3 952	-4 017
Machinery and industrial equipment	-1 244	-1 359	-1 339	-1 271	-1 299	-1 209	-1 348	-1 220	-1 120	-1 375
ADP equipment	-508	-568	-668	-604	-553	-594	-565	-592	-636	-658
Telecommunications equipment	-526	-511	-512	-505	-522	-490	-489	-501	-490	-434
Civil aircraft(b)(c)	na	na	na	na	na	na	na	na	na	na
Industrial transport equipment n.e.s.	-298	-355	-428	-412	-517	-497	-539	-549	-520	-611
Capital goods n.e.s.(b)	-963	-883	-893	-1 132	-1 106	-1 270	-807	-1 143	-1 186	-938
Intermediate and other merchandise goods	-6 668	-6 952	-7 419	-6 681	-7 321	-7 043	-6 947	-7 759	-7 265	-7 208
Food and beverages, mainly for industry	-88	-89	-94	-98	-78	-80	-80	-87	-65	-82
Primary industrial supplies n.e.s.(d)	-101	-125	-83	-120	-105	-81	-112	-123	-99	-118
Fuels and lubricants(c)	-1 761	-2 021	-2 426	-1 794	-2 245	-2 004	-2 093	-2 624	-1 935	-2 083
Parts for transport equipment	-593	-602	-584	-623	-771	-691	-616	-677	-733	-707
Parts for ADP equipment	-74	-80	-95	-75	-60	-78	-77	-81	-90	-91
Other parts for capital goods	-1 176	-1 179	-1 166	-1 128	-1 151	-1 169	-1 086	-1 239	-1 189	-1 098
Organic and inorganic chemicals	-359	-398	-363	-355	-331	-367	-383	-366	-349	-336
Paper and paperboard	-168	-168	-172	-175	-186	-184	-186	-194	-197	-195
Textile yarn and fabrics	-99	-93	-101	-107	-102	-102	-95	-93	-97	-99
Iron and steel	-281	-271	-282	-265	-250	-203	-225	-254	-248	-289
Plastics	-201	-211	-232	-214	-211	-219	-212	-217	-217	-229
Processed industrial supplies n.e.s.	-1 598	-1 560	-1 633	-1 553	-1 601	-1 617	-1 606	-1 619	-1 712	-1 677
Other merchandise goods(b)(e)	-87	-73	-75	-62	-114	-139	-69	-80	-195	-66
Goods procured in ports by carriers(c)	-80	-81	-114	-114	-117	-108	-108	-105	-138	-138
Non-monetary gold(c)	-884	-346	-255	-555	-737	-672	-441	-665	-351	-467

na not available

(a) For sign conventions, see paragraph 15 of the Explanatory Notes.

(b) From December 2008, the Civil aircraft series and commodities subject to a 'no commodity details' or 'no value details' restriction are included in Capital goods n.e.s.. From September to November 2008 commodities with these restrictions are included in Civil aircraft and for earlier periods are included in Other merchandise goods.

(c) This component is not seasonally adjusted.

(d) In using these seasonally adjusted series, care should be exercised because of the difficulties associated with reliably estimating the seasonal pattern.

(e) From July 1981, this component is not seasonally adjusted.

GOODS CREDITS(a), Trend Estimates

	May 2009	Jun 2009	Jul 2009	Aug 2009	Sep 2009	Oct 2009	Nov 2009	Dec 2009	Jan 2010	Feb 2010
	\$m	\$m	\$m	\$m	\$m	\$m	\$m	\$m	\$m	\$m
Total goods credits	16 370	15 723	15 280	15 095	15 124	15 203	15 268	15 351	15 444	15 532
General merchandise	15 059	14 600	14 257	14 065	14 023	14 050	14 104	14 201	14 319	14 447
<i>Rural goods</i>	2 397	2 290	2 177	2 079	2 020	1 996	2 000	2 023	2 056	2 092
Meat and meat preparations	585	567	548	530	515	502	492	485	480	476
Cereal grains and cereal preparations	616	572	522	474	441	421	411	410	414	418
Wool and sheepskins	167	162	162	164	171	179	188	195	201	205
Other rural(b)	1 030	989	946	911	892	893	908	933	962	993
<i>Non-rural goods</i>	12 662	12 309	12 080	11 985	12 004	12 053	12 104	12 178	12 264	12 355
Metal ores and minerals	3 830	3 711	3 629	3 598	3 610	3 645	3 691	3 751	3 819	3 886
Coal, coke and briquettes	3 296	3 102	2 955	2 863	2 822	2 790	2 745	2 696	2 646	2 603
Other mineral fuels	1 332	1 310	1 308	1 322	1 348	1 380	1 416	1 456	1 495	1 532
Metals (excl. non-monetary gold)	838	844	845	844	844	847	854	865	878	888
Machinery	685	675	665	658	655	651	648	647	647	649
Transport equipment	272	274	289	307	321	329	332	337	343	350
Other manufactures	1 404	1 390	1 377	1 365	1 356	1 347	1 341	1 337	1 336	1 337
Other non-rural (incl. sugar and beverages)	900	902	910	924	941	956	966	974	982	990
Goods procured in ports by carriers	106	103	102	103	106	109	112	114	117	119
Net exports of goods under merchanting	33	33	33	32	30	26	22	19	18	17
Non-monetary gold	1 278	1 091	990	998	1 071	1 128	1 143	1 131	1 107	1 067

(a) Caution should be used when interpreting recent trend estimates as they may be affected by unusual economic factors. For more details on trend estimates, please see paragraph 19 of the explanatory notes.

(b) For all time periods, estimates for sugar, sugar preparations and honey are included in Other non-rural.

	May 2009	Jun 2009	Jul 2009	Aug 2009	Sep 2009	Oct 2009	Nov 2009	Dec 2009	Jan 2010	Feb 2010
	\$m	\$m	\$m	\$m	\$m	\$m	\$m	\$m	\$m	\$m
Total goods debits	-16 408	-16 293	-16 266	-16 322	-16 440	-16 568	-16 682	-16 795	-16 897	-17 017
General merchandise	-15 734	-15 750	-15 784	-15 820	-15 889	-15 993	-16 111	-16 254	-16 395	-16 567
<i>Consumption goods</i>	-5 044	-5 094	-5 114	-5 088	-5 052	-5 042	-5 054	-5 089	-5 135	-5 195
Food and beverages, mainly for consumption	-750	-754	-754	-748	-738	-726	-715	-707	-702	-700
Household electrical items	-502	-514	-512	-499	-480	-464	-454	-448	-443	-439
Non-industrial transport equipment	-938	-1 002	-1 076	-1 139	-1 196	-1 251	-1 305	-1 360	-1 412	-1 460
Textiles, clothing and footwear	-687	-676	-658	-632	-609	-593	-584	-583	-587	-597
Toys, books and leisure goods	-446	-442	-433	-418	-403	-391	-381	-372	-366	-362
Consumption goods n.e.s.	-1 722	-1 707	-1 681	-1 651	-1 626	-1 617	-1 615	-1 619	-1 625	-1 637
<i>Capital goods</i>	-3 769	-3 706	-3 681	-3 693	-3 735	-3 784	-3 832	-3 888	-3 944	-4 001
Machinery and industrial equipment	-1 395	-1 340	-1 305	-1 284	-1 274	-1 265	-1 253	-1 248	-1 249	-1 256
ADP equipment	-572	-582	-589	-590	-589	-588	-592	-602	-615	-633
Telecommunications equipment	-539	-524	-511	-507	-505	-501	-494	-485	-475	-465
Civil aircraft(c)	na	na	na	na	na	na	na	na	na	na
Industrial transport equipment n.e.s.	-349	-361	-394	-435	-474	-505	-527	-546	-562	-577
Capital goods n.e.s.(c)	np	np	np	np	np	np	np	np	np	np
<i>Intermediate and other merchandise goods</i>	-6 922	-6 950	-6 989	-7 039	-7 102	-7 167	-7 224	-7 277	-7 317	-7 371
Food and beverages, mainly for industry	-93	-92	-90	-88	-86	-83	-80	-78	-77	-76
Primary industrial supplies n.e.s.	-104	-102	-102	-103	-103	-104	-105	-108	-111	-112
Fuels and lubricants	-1 889	-1 970	-2 041	-2 099	-2 138	-2 157	-2 168	-2 175	-2 169	-2 180
Parts for transport equipment	-609	-615	-629	-646	-663	-678	-686	-692	-699	-702
Parts for ADP equipment	-83	-81	-78	-76	-75	-76	-78	-81	-85	-90
Other parts for capital goods	-1 194	-1 177	-1 160	-1 149	-1 148	-1 153	-1 158	-1 160	-1 160	-1 158
Organic and inorganic chemicals	-371	-366	-363	-361	-360	-360	-360	-359	-356	-352
Paper and paperboard	-172	-171	-172	-176	-181	-185	-189	-192	-195	-197
Textile yarn and fabrics	-101	-101	-101	-101	-101	-100	-98	-97	-96	-96
Iron and steel	-297	-277	-264	-250	-241	-236	-237	-243	-251	-262
Plastics	-219	-217	-215	-215	-215	-216	-216	-217	-219	-222
Processed industrial supplies n.e.s.	-1 595	-1 588	-1 583	-1 583	-1 593	-1 608	-1 625	-1 644	-1 662	-1 682
Other merchandise goods(c)	-106	-99	-90	-86	-90	-100	-108	-112	-113	-114
Goods procured in ports by carriers	-88	-93	-100	-106	-110	-113	-115	-119	-124	-129
Non-monetary gold	-673	-542	-482	-501	-551	-575	-571	-541	-501	-450

na not available

np not available for publication but included in totals where applicable, unless otherwise indicated

(a) For sign conventions, see paragraph 15 of the Explanatory Notes.

(b) Caution should be used when interpreting recent trend estimates as they may be affected by unusual economic factors. For more details on trend estimates, please see paragraph 19 of the explanatory notes.

(c) From December 2008, the Civil aircraft series and commodities subject to a 'no commodity details' or 'no value details' restriction are included in Capital goods n.e.s.. From September to November 2008 commodities with these restrictions are included in Civil aircraft and for earlier periods are included in Other merchandise goods. Trend estimates for the Capital goods n.e.s. series from December 2008 have been suppressed due to the change in the composition of the series.

							8 MONTHS ENDED FEBRUARY		Change
	2006-07	2007-08	2008-09	Dec 2009	Jan 2010	Feb 2010	2009	2010	
	\$m	\$m	\$m	\$m	\$m	\$m	\$m	\$m	
Services credits	45 956	50 645	52 813	4 352	4 337	4 570	35 394	35 516	0.3
Manufacturing services on physical inputs owned by others	121	77	258	27	27	24	145	210	44.8
Maintenance and repair services n.i.e.	90	103	26	1	2	1	21	13	-38.1
Transport	8 546	9 129	7 342	572	553	531	5 300	4 308	-18.7
Passenger(c)	4 237	4 118	3 410	244	254	232	2 494	1 764	-29.3
Freight	765	1 463	851	53	35	35	648	390	-39.8
Other	2 348	2 595	2 127	193	182	182	1 476	1 462	-0.9
Postal and courier services(d)	1 196	953	954	82	82	82	682	692	1.5
Travel	25 161	28 252	31 096	2 652	2 669	2 929	20 352	22 365	9.9
Other services	12 038	13 084	14 091	1 100	1 086	1 085	9 576	8 620	-10.0
Services debits	-45 139	-53 330	-56 184	-4 883	-4 946	-4 164	-38 994	-36 783	5.7
Manufacturing services on physical inputs owned by others	-3	-7	-4	-2	-1	-1	-4	-6	-50.0
Maintenance and repair services n.i.e.	-131	-97	-175	-32	-15	-53	-108	-193	-78.7
Transport	-15 732	-16 797	-15 832	-1 269	-1 049	-1 063	-11 556	-8 958	22.5
Passenger(c)	-6 876	-7 278	-5 835	-505	-410	-395	-4 171	-3 374	19.1
Freight	-8 303	-8 923	-9 386	-726	-602	-631	-6 968	-5 243	24.8
Other	-385	-417	-437	-26	-25	-25	-296	-212	28.4
Postal and courier services(d)	-168	-179	-174	-12	-12	-12	-121	-129	-6.6
Travel	-15 934	-20 153	-22 082	-2 152	-2 427	-1 573	-15 200	-16 432	-8.1
Other services	-13 339	-16 276	-18 091	-1 428	-1 454	-1 474	-12 126	-11 194	7.7
Memorandum items:									
Tourism related service credits(e)	29 398	32 370	34 506	2 896	2 923	3 161	22 846	24 129	5.6
Tourism related service debits(e)	-22 810	-27 431	-27 917	-2 657	-2 837	-1 968	-19 371	-19 806	-2.2

(a) For sign conventions, see paragraph 15 of the Explanatory Notes.

(b) For more detailed trade in services components, see table 11.

(c) Passenger services includes agency fees and commissions for air transport.

(d) Postal and courier services includes indirect commissions for sea transport.

(e) For a more detailed explanation of tourism related services, see paragraph 27 of the Explanatory Notes.

	May 2009	Jun 2009	Jul 2009	Aug 2009	Sep 2009	Oct 2009	Nov 2009	Dec 2009	Jan 2010	Feb 2010
	\$m	\$m	\$m	\$m	\$m	\$m	\$m	\$m	\$m	\$m
SEASONALLY ADJUSTED										
Services credits	4 392	4 397	4 371	4 400	4 515	4 411	4 394	4 416	4 447	4 489
Manufacturing services on physical inputs owned by others(b)	28	27	28	24	20	32	28	27	27	24
Maintenance and repair services n.i.e.(b)	1	1	2	3	2	1	1	1	2	1
Transport	509	515	516	521	527	541	539	539	527	525
Passenger(c)	227	232	215	217	221	216	214	210	209	208
Freight(d)	52	50	54	53	52	50	51	49	39	38
Other(d)	161	163	169	173	172	187	187	191	189	190
Postal and courier services(e)	69	69	77	78	82	88	88	89	91	89
Travel	2 748	2 742	2 741	2 766	2 872	2 784	2 770	2 793	2 779	2 822
Other services	1 106	1 112	1 084	1 086	1 094	1 053	1 056	1 055	1 112	1 117
Services debits	-4 352	-4 435	-4 323	-4 360	-4 383	-4 558	-4 574	-4 616	-4 659	-4 788
Manufacturing services on physical inputs owned by others(b)	—	—	—	-1	—	-1	—	-2	-1	-1
Maintenance and repair services n.i.e.(b)	-19	-20	-17	-18	-20	-17	-21	-32	-15	-53
Transport	-1 023	-1 068	-1 052	-1 031	-1 063	-1 129	-1 119	-1 154	-1 130	-1 171
Passenger(c)	-357	-404	-387	-387	-394	-428	-448	-460	-447	-454
Freight	-616	-614	-623	-602	-626	-657	-628	-653	-641	-674
Other(b)	-35	-34	-28	-28	-28	-26	-26	-26	-25	-25
Postal and courier services(e)	-15	-16	-14	-14	-15	-17	-17	-15	-17	-18
Travel	-1 848	-1 854	-1 904	-1 950	-1 935	-2 023	-2 036	-2 026	-2 048	-2 068
Other services	-1 462	-1 493	-1 349	-1 360	-1 366	-1 388	-1 398	-1 402	-1 464	-1 495
Memorandum items:										
Tourism related service credits(f)	2 975	2 974	2 957	2 983	3 093	2 999	2 983	3 003	2 988	3 030
Tourism related service debits(f)	-2 205	-2 258	-2 291	-2 336	-2 328	-2 451	-2 484	-2 486	-2 495	-2 522

TREND ESTIMATES

Services credits	4 391	4 394	4 405	4 415	4 422	4 427	4 431	4 436	4 444	4 451
Manufacturing services on physical inputs owned by others	29	27	26	26	26	27	27	27	27	27
Maintenance and repair services n.i.e.	1	2	2	2	2	2	1	1	1	1
Transport	523	516	516	521	528	533	535	535	534	531
Passenger(c)	238	227	221	218	216	215	213	211	210	208
Freight	51	52	52	53	52	51	49	46	43	40
Other	163	165	168	172	177	182	186	188	191	192
Postal and courier services(e)	71	72	75	79	82	85	88	89	90	91
Travel	2 726	2 750	2 771	2 786	2 793	2 796	2 796	2 795	2 796	2 795
Other services	1 111	1 100	1 090	1 080	1 073	1 070	1 071	1 078	1 087	1 096
Services debits	-4 387	-4 367	-4 367	-4 388	-4 433	-4 494	-4 562	-4 627	-4 687	-4 735
Manufacturing services on physical inputs owned by others	—	—	—	—	-1	-1	-1	-1	-1	-1
Maintenance and repair services n.i.e.	-17	-17	-18	-18	-19	-20	-23	-27	-31	-35
Transport	-1 074	-1 055	-1 048	-1 055	-1 074	-1 098	-1 120	-1 138	-1 153	-1 165
Passenger(c)	-403	-392	-389	-394	-406	-422	-436	-447	-456	-462
Freight	-624	-616	-615	-618	-625	-634	-641	-648	-655	-661
Other	-34	-32	-30	-29	-27	-27	-26	-26	-25	-25
Postal and courier services(e)	-14	-15	-15	-15	-15	-16	-16	-17	-17	-17
Travel	-1 839	-1 867	-1 900	-1 935	-1 967	-1 995	-2 019	-2 038	-2 054	-2 065
Other services	-1 456	-1 428	-1 401	-1 379	-1 372	-1 381	-1 400	-1 424	-1 448	-1 469
Memorandum items:										
Tourism related service credits(f)	2 964	2 977	2 991	3 003	3 009	3 011	3 009	3 007	3 005	3 003
Tourism related service debits(f)	-2 242	-2 259	-2 289	-2 329	-2 374	-2 417	-2 455	-2 485	-2 510	-2 527

— nil or rounded to zero (including null cells)

(a) For sign conventions, see paragraph 15 of the Explanatory Notes.

(b) This component is not seasonally adjusted.

(c) Passenger services includes agency fees and commissions for air transport.

(d) In using these seasonally adjusted series, care should be exercised because of the difficulties associated with reliably estimating the seasonal pattern.

(e) Postal and courier services includes indirect commissions for sea transport.

(f) For a more detailed explanation of tourism related services, see paragraph 27 of the Explanatory Notes.

	CREDITS				DEBITS			
	Mar Qtr	Jun Qtr	Sep Qtr	Dec Qtr	Mar Qtr	Jun Qtr	Sep Qtr	Dec Qtr
	2009	2009	2009	2009	2009	2009	2009	2009
	\$m	\$m	\$m	\$m	\$m	\$m	\$m	\$m
Services	13 462	12 841	13 245	13 364	-13 058	-12 979	-13 480	-14 193
Manufacturing services on physical inputs owned by others	84	86	72	87	—	—	-1	-3
Maintenance and repair services n.i.e.	6	3	7	3	-56	-47	-55	-70
Transport	1 844	1 455	1 578	1 646	-3 471	-3 111	-3 207	-3 639
Passenger(b)	985	616	611	667	-1 245	-1 232	-1 212	-1 357
Freight	154	151	164	156	-2 087	-1 732	-1 844	-2 166
Other	487	488	521	577	-111	-104	-84	-78
Postal and courier services(c)	218	200	282	246	-28	-43	-67	-38
Travel	8 134	7 911	8 433	8 334	-5 090	-5 341	-6 220	-6 212
Business	708	644	693	663	-752	-717	-768	-768
Personal	7 426	7 267	7 740	7 671	-4 338	-4 624	-5 452	-5 444
Education-related	4 218	4 518	4 971	4 275	-177	-168	-263	-215
Other(d)	3 208	2 749	2 769	3 396	-4 161	-4 456	-5 189	-5 229
Construction	21	12	47	27	—	—	—	—
Insurance and pension services	78	58	76	75	-145	-137	-123	-134
Financial services	366	302	314	289	-171	-181	-155	-183
Charges for the use of intellectual property n.i.e.	200	273	213	252	-890	-906	-891	-923
Telecommunications, computer and information services	507	513	461	430	-584	-560	-511	-510
Telecommunication services	76	63	62	70	-180	-139	-122	-126
Computer and information services	431	450	399	360	-404	-421	-389	-384
Computer services	356	362	315	297	-336	-358	-327	-316
Information services	9	12	8	8	-11	-10	-5	-9
Other services	66	76	76	55	-57	-53	-57	-59
Other business services	1 802	1 815	1 640	1 829	-2 029	-2 142	-1 799	-1 979
Research and development services	131	146	130	158	-60	-60	-55	-67
Professional and management consulting services	868	880	773	828	-896	-977	-710	-860
Legal, accounting, management consulting, public relations and other professional services	773	789	685	733	-844	-930	-682	-821
Advertising, market research and public opinion polling	95	91	88	95	-52	-47	-28	-39
Technical, trade-related and other business services	803	789	737	843	-1 073	-1 105	-1 034	-1 052
Architectural, engineering and other technical services	388	340	383	407	-418	-431	-379	-447
Waste treatment and de-pollution, agricultural and mining services	65	59	52	54	-152	-186	-142	-150
Operational leasing services	73	63	75	90	-229	-187	-196	-196
Trade-related commission services	178	220	123	174	-44	-57	-56	-54
Other business services n.i.e.	99	107	104	118	-230	-244	-261	-205
Personal, cultural and recreational services	204	196	194	182	-419	-314	-296	-318
Audiovisual and related services	53	24	28	32	-315	-287	-266	-281
Other personal, cultural and recreational services	151	172	166	150	-104	-27	-30	-37
Government goods and services n.i.e.	216	217	210	210	-203	-240	-222	-222
Memorandum items:								
Gross insurance premiums receivable / payable	201	165	171	179	-262	-245	-249	-263
Gross insurance claims payable / receivable	-133	-123	-117	-121	287	275	278	288
Tourism related services(e)	9 119	8 527	9 044	9 001	-6 335	-6 573	-7 432	-7 569

— nil or rounded to zero (including null cells)

(a) For sign conventions, see paragraph 15 of the Explanatory Notes.

(b) Passenger services includes agency fees and commissions for air transport.

(c) Postal and courier services includes indirect commissions for sea transport.

(d) Other personal travel includes health-related travel.

(e) For a more detailed explanation of tourism related services, see paragraph 27 of the Explanatory Notes.

				Per cent of total merchandise exports(b)	8 MONTHS ENDED FEBRUARY	
	Dec	Jan	Feb		2009	2010
	2009	2010	2010			
	\$m	\$m	\$m	%	\$m	\$m
MAJOR COMMODITIES (c)						
011 Meat of bovine animals	342	194	274	1.9	3 454	2 541
041 Wheat and meslin	277	349	318	2.2	2 817	2 359
268 Wool and other animal hair	173	123	206	1.4	1 356	1 222
281 Iron ore and concentrates	2 383	2 285	2 236	15.4	24 057	18 553
283 Copper ores and concentrates	395	235	487	3.4	2 338	2 809
285 Aluminium ores and concentrates	455	450	378	2.6	4 557	3 161
321 Coal, not agglomerated	2 991	2 772	2 209	15.2	40 856	22 073
333 Crude petroleum oils	756	545	558	3.8	6 178	5 192
334 Refined petroleum oils	197	176	199	1.4	2 011	1 589
343 Natural gas	625	726	750	5.2	7 810	5 038
682 Copper	245	142	137	0.9	2 005	1 606
684 Aluminium	392	363	306	2.1	3 874	2 623
781 Motor vehicles for transport of people	179	59	176	1.2	2 280	1 154
971 Gold, non-monetary	1 013	1 215	868	6.0	11 545	8 248

SECTION AND DIVISION OF THE SITC

0	Food and live animals					
00	Live animals (excl. fish, crustaceans, molluscs and aquatic invertebrates)	113	88	91	0.6	788 805
01	Meat and meat preparations	551	323	453	3.1	5 047 3 988
02	Dairy products and birds' eggs	178	149	155	1.1	1 813 1 265
03	Fish (not marine mammals), crustaceans, molluscs and aquatic invertebrates, and preparations thereof	116	106	99	0.7	804 679
04	Cereals and cereal preparations	384	489	482	3.3	4 070 3 334
05	Vegetables and fruit	130	125	127	0.9	975 995
06	Sugars, sugar preparations and honey	16	21	27	0.2	177 196
07	Coffee, tea, cocoa, spices, and manufactures thereof	27	16	22	0.1	194 196
08	Feeding stuff for animals (excl. unmilled cereals)	68	56	67	0.5	900 657
09	Miscellaneous edible products and preparations	63	54	65	0.4	441 457
	<i>Total Food and live animals</i>	<i>1 646</i>	<i>1 425</i>	<i>1 587</i>	<i>10.9</i>	<i>15 209 12 573</i>
1	Beverages and tobacco					
11	Beverages	216	137	178	1.2	1 781 1 563
12	Tobacco and tobacco manufactures	13	7	7	—	92 82
	<i>Total Beverages and tobacco</i>	<i>229</i>	<i>145</i>	<i>185</i>	<i>1.3</i>	<i>1 873 1 645</i>
2	Crude materials, inedible, except fuels					
21	Hides, skins and furskins, raw	56	30	50	0.3	460 352
22	Oil-seeds and oleaginous fruits	93	123	87	0.6	361 434
23	Crude rubber (incl. synthetic and reclaimed)	1	1	1	—	9 8
24	Cork and wood	110	77	93	0.6	862 742
25	Pulp and waste paper	20	20	20	0.1	184 149
26	Textile fibres and their wastes (not manufactured into yarn or fabric)	233	158	264	1.8	1 712 1 651
27	Crude fertilizers (excl. those of Division 56) and crude minerals (excl. coal, petroleum and precious stones)	32	19	25	0.2	253 184
28	Metalliferous ores and metal scrap	4 021	3 589	3 761	25.9	36 386 29 615
29	Crude animal and vegetable materials, n.e.s.	17	12	15	0.1	164 133
	<i>Total Crude materials, inedible, except fuels</i>	<i>4 582</i>	<i>4 030</i>	<i>4 317</i>	<i>29.7</i>	<i>40 389 33 267</i>
3	Mineral fuels, lubricants and related materials					
32	Coal, coke and briquettes	3 004	2 773	2 213	15.2	41 022 22 125
33	Petroleum, petroleum products and related materials	954	723	758	5.2	8 201 6 789
34	Gas, natural and manufactured	743	805	831	5.7	8 577 5 791
	<i>Total Mineral fuels, lubricants and related materials</i>	<i>4 702</i>	<i>4 301</i>	<i>3 803</i>	<i>26.2</i>	<i>57 800 34 705</i>

— nil or rounded to zero (including null cells)

(a) Some SITC sections and divisions exclude commodities subject to a confidentiality restriction. These are included in Division 98. For more information see paragraph 26 of the Explanatory Notes.

(b) Per cent of total merchandise is calculated for the most recent month.

(c) The 'Major commodities' section lists commodities at the SITC Rev 4 3-digit level which are the most significant (by value) or are of particular interest. Abbreviated descriptors have been used. The list of 'Major commodities' is reviewed annually.

	Dec 2009	Jan 2010	Feb 2010	Per cent of total merchandise exports(b)	8 MONTHS ENDED FEBRUARY	
					2009	2010
					\$m	\$m
SECTION AND DIVISION OF THE SITC						
4	Animal and vegetable oils, fats and waxes					
41	19	12	18	0.1	218	157
42	14	13	12	0.1	127	100
43	Fats and oils (processed), waxes and inedible mixtures or preparations, of animal or vegetable origin, n.e.s.					
	2	1	1	—	8	9
	<i>Total Animal and vegetable oils, fats and waxes</i>					
	34	26	31	0.2	353	266
5	Chemicals and related products, n.e.s.					
51	12	10	15	0.1	113	105
52	45	37	48	0.3	365	338
53	56	40	56	0.4	367	443
54	343	286	258	1.8	2 639	2 662
55	Essential oils and resinoids and perfume materials, toilet, polishing and cleansing preparations					
	51	39	51	0.3	408	401
56	15	17	8	0.1	621	260
57	23	17	26	0.2	209	175
58	25	13	32	0.2	254	237
59	78	75	79	0.5	738	646
	<i>Total Chemicals and related products, nes</i>					
	648	533	573	4.0	5 714	5 267
6	Manufactured goods classified chiefly by material					
61	26	13	22	0.2	182	162
62	16	10	15	0.1	176	121
63	11	10	8	0.1	107	92
64	50	50	60	0.4	448	434
65	24	13	23	0.2	246	186
66	39	47	80	0.6	631	510
67	78	73	104	0.7	1 071	616
68	856	735	700	4.8	7 836	6 130
69	94	53	83	0.6	737	704
	<i>Total Manufactured goods classified chiefly by material</i>					
	1 195	1 003	1 096	7.6	11 434	8 956
7	Machinery and transport equipment					
71	70	48	61	0.4	625	511
72	176	101	125	0.9	1 300	1 201
73	14	8	12	0.1	133	92
74	General industrial machinery and equipment, n.e.s. and machine parts, n.e.s.					
	155	101	134	0.9	1 269	1 119
75	81	78	90	0.6	842	658
76	Telecommunications and sound recording and reproducing apparatus and equipment					
	79	55	76	0.5	760	633
77	Electrical machinery, apparatus and appliances, parts (incl. non electrical counterparts of electrical domestic equip)					
	124	84	131	0.9	1 189	996
78	279	124	250	1.7	2 983	1 779
79	95	64	111	0.8	1 017	908
	<i>Total Machinery and transport equipment</i>					
	1 074	662	991	6.8	10 118	7 897

— nil or rounded to zero (including null cells)

(b) Per cent of total merchandise is calculated for the most recent month.

(a) Some SITC sections and divisions exclude commodities subject to a confidentiality restriction. These are included in Division 98. For more information see paragraph 26 of the Explanatory Notes.

	Dec 2009	Jan 2010	Feb 2010	Per cent of total merchandise exports(b)	8 MONTHS ENDED FEBRUARY	
					2009	2010
					\$m	\$m
SECTION AND DIVISION OF THE SITC						
8	Miscellaneous manufactured articles					
81	Prefabricated buildings and sanitary, plumbing, heating and lighting fixtures and fittings, n.e.s.					
	17	18	12	0.1	98	110
82	Furniture and parts thereof; bedding, mattresses, mattress supports, cushions and similar stuffed furnishings					
	9	5	12	0.1	89	70
83	Travel goods, handbags and similar containers					
	4	2	3	—	20	23
84	Articles of apparel and clothing accessories					
	18	16	22	0.1	164	160
85	Footwear					
	4	2	4	—	35	29
87	Professional, scientific and controlling instruments and apparatus, n.e.s.					
	187	126	162	1.1	1 477	1 311
88	Photographic apparatus, equipment and supplies and optical goods, n.e.s., watches and clocks					
	24	16	21	0.1	248	193
89	Miscellaneous manufactured articles, n.e.s.					
	177	117	156	1.1	1 547	1 385
	<i>Total Miscellaneous manufactured articles</i>					
	439	302	390	2.7	3 679	3 281
9	Commodities and transactions not classified elsewhere in the SITC					
93	Special transactions and commodities not classified according to kind					
	166	143	147	1.0	1 101	1 256
95	Gold coin whether or not legal tender, and other coin being legal tender					
	63	25	23	0.2	413	288
96	Coin (excl. gold coin) not being legal tender					
	—	—	—	—	—	—
97	Gold, non-monetary (excl. gold ores and concentrates)					
	1 013	1 215	868	6.0	11 545	8 248
98	Combined confidential items excl. some of SITC 280 (exports only) and some of SITCs 510 and 520 (imports only)					
	669	563	503	3.5	3 852	4 483
	<i>Total Commodities and transactions not classified elsewhere in the SITC</i>					
	1 910	1 946	1 542	10.6	16 911	14 275
Total merchandise exports						
	16 459	14 372	14 516	100.0	163 481	122 130
Balance of Payments Adjustments						
	34	43	59	..	556	365
Goods Credits (exports) on a Balance of Payments Basis						
	16 493	14 415	14 575	..	164 037	122 495

.. not applicable
 — nil or rounded to zero (including null cells)

(a) Some SITC sections and divisions exclude commodities subject to a confidentiality restriction. These are included in Division 98. For more information see paragraph 26 of the Explanatory Notes.

(b) Per cent of total merchandise is calculated for the most recent month.

				Per cent of total merchandise imports(b)	8 MONTHS ENDED FEBRUARY	
	Dec	Jan	Feb		2009	2010
	2009	2010	2010			
	\$m	\$m	\$m	%	\$m	\$m
MAJOR COMMODITIES						
333 Crude petroleum oils	1 505	1 189	1 245	8.1	10 782	9 440
334 Refined petroleum oils	984	690	784	5.1	9 106	7 032
542 Medicaments	543	558	623	4.1	4 639	4 908
641 Paper and paperboard	147	161	153	1.0	1 465	1 258
723 Civil engineering and contractors' plant and equipment	192	158	210	1.4	2 598	1 680
751 Office machines	149	153	150	1.0	1 335	1 292
752 Automatic data processing machines	537	459	426	2.8	3 895	3 724
761 Televisions	253	178	184	1.2	1 990	2 214
764 Telecommunications equipment	594	421	404	2.6	4 864	4 534
781 Motor vehicles for the transport of people	1 286	1 038	1 237	8.1	8 235	9 244
782 Motor vehicles for the transport of goods	521	403	515	3.4	3 961	3 616
784 Parts and accessories of motor vehicles	182	205	190	1.2	1 745	1 550
971 Gold, non-monetary	729	414	522	3.4	8 488	4 599

SECTION AND DIVISION OF THE SITC

0	Food and live animals					
00	Live animals other than fish, crustaceans, molluscs and aquatic invertebrates	9	7	27	0.2	70 72
01	Meat and meat preparations	45	43	43	0.3	364 351
02	Dairy products and birds' eggs	56	49	57	0.4	416 386
03	Fish (not marine mammals), crustaceans, molluscs and aquatic invertebrates, and preparations thereof	123	102	97	0.6	903 860
04	Cereals and cereal preparations	68	51	50	0.3	554 552
05	Vegetables and fruit	152	119	122	0.8	1 162 1 066
06	Sugars, sugar preparations and honey	26	18	20	0.1	178 190
07	Coffee, tea, cocoa, spices, and manufactures thereof	99	78	69	0.5	810 805
08	Feeding stuff for animals (excl. unmilled cereals)	67	41	30	0.2	427 401
09	Miscellaneous edible products and preparations	136	136	113	0.7	1 010 1 078
	<i>Total Food and live animals</i>	780	644	627	4.1	5 894 5 761
1	Beverages and tobacco					
11	Beverages	156	106	84	0.5	1 082 1 059
12	Tobacco and tobacco manufactures	20	15	18	0.1	130 163
	<i>Total Beverages and tobacco</i>	176	121	102	0.7	1 213 1 222
2	Crude materials, inedible, except fuels					
21	Hides, skins and furskins, raw	—	—	—	—	1 —
22	Oil-seeds and oleaginous fruits	7	5	5	—	42 34
23	Crude rubber (incl. synthetic and reclaimed)	11	9	10	0.1	141 88
24	Cork and wood	52	48	48	0.3	422 392
25	Pulp and waste paper	22	16	14	0.1	215 124
26	Textile fibres and their wastes (not manufactured into yarn or fabric)	10	9	9	0.1	92 94
27	Crude fertilizers (excl. those of Division 56) and crude minerals (excl. coal, petroleum and precious stones)	21	9	7	—	405 82
28	Metalliferous ores and metal scrap	95	38	22	0.1	491 334
29	Crude animal and vegetable materials, n.e.s.	32	27	26	0.2	246 217
	<i>Total Crude materials, inedible, except fuels</i>	250	162	140	0.9	2 054 1 365
3	Mineral fuels, lubricants and related materials					
32	Coal, coke and briquettes	1	1	1	—	23 16
33	Petroleum, petroleum products and related materials	2 537	1 912	2 073	13.6	20 405 16 762
34	Gas, natural and manufactured	155	95	94	0.6	1 831 1 057
	<i>Total Mineral fuels, lubricants and related materials</i>	2 694	2 008	2 168	14.2	22 259 17 835

— nil or rounded to zero (including null cells)

(a) Some SITC sections and divisions exclude commodities subject to a confidentiality restriction. These are included in Division 98. For more information see paragraph 26 of the Explanatory Notes.

(b) Per cent of total merchandise is calculated for the most recent month.

(c) The 'Major commodities' section lists commodities at the SITC Rev 4 3-digit level which are the most significant (by value) or are of particular interest. Abbreviated descriptors have been used. The list of 'Major commodities' is reviewed annually.

	Dec 2009	Jan 2010	Feb 2010	Per cent of total merchandise imports(b)	8 MONTHS ENDED FEBRUARY	
					2009	2010
					\$m	\$m
SECTION AND DIVISION OF THE SITC						
4	Animal and vegetable oils, fats and waxes					
41	3	1	5	—	27	20
42	46	30	23	0.2	366	294
43	Fats and oils (processed), waxes and inedible mixtures or preparations, of animal or vegetable n.e.s.					
	4	5	3	—	46	46
	<i>Total Animal and vegetable oils, fats and waxes</i>					
	53	36	32	0.2	439	360
5	Chemicals and related products, n.e.s.					
51	292	285	277	1.8	2 429	2 128
52	88	93	72	0.5	1 462	729
53	53	43	48	0.3	499	408
54	672	681	748	4.9	5 725	6 003
55	Essential oils and resinoids and perfume materials; toilet, polishing and cleansing preparations					
	150	127	134	0.9	1 205	1 221
56	39	50	99	0.6	1 246	415
57	108	106	104	0.7	1 184	865
58	115	104	102	0.7	998	917
59	177	144	146	1.0	1 516	1 259
	<i>Total Chemicals and related products, n.e.s.</i>					
	1 695	1 633	1 729	11.3	16 264	13 946
6	Manufactured goods classified chiefly by material					
61	13	9	12	0.1	120	91
62	217	232	216	1.4	1 844	1 807
63	54	59	62	0.4	496	421
64	219	218	209	1.4	2 043	1 810
65	173	185	194	1.3	1 805	1 623
66	221	183	222	1.5	1 938	1 751
67	246	244	281	1.8	4 362	2 056
68	154	390	165	1.1	1 460	1 569
69	386	373	380	2.5	4 045	3 392
	<i>Total Manufactured goods classified chiefly by material</i>					
	1 684	1 892	1 741	11.4	18 114	14 521
7	Machinery and transport equipment					
71	441	336	415	2.7	3 721	3 055
72	587	469	500	3.3	5 772	4 473
73	49	44	41	0.3	520	385
74	General industrial machinery and equipment, n.e.s. and machine parts, n.e.s.					
	1 111	939	752	4.9	7 997	7 889
75	773	699	653	4.3	6 038	5 656
76	Telecommunications and sound recording and reproducing apparatus and equipment					
	950	669	657	4.3	7 782	7 604
77	Electrical machinery, apparatus, appliances, parts (incl. non-elec. counterparts of electrical domestic equip)					
	837	711	727	4.8	6 884	6 225
78	2 143	1 776	2 068	13.5	15 596	15 589
79	114	149	83	0.5	2 850	1 509
	<i>Total Machinery and transport equipment</i>					
	7 005	5 791	5 897	38.6	57 159	52 385

— nil or rounded to zero (including null cells)

(b) Per cent of total merchandise is calculated for the most recent month.

(a) Some SITC sections and divisions exclude commodities subject to a confidentiality restriction. These are included in Division 98. For more information see paragraph 26 of the Explanatory Notes.

	Dec 2009	Jan 2010	Feb 2010	Per cent of total merchandise imports(b)	8 MONTHS ENDED FEBRUARY	
					2009	2010
					\$m	\$m
SECTION AND DIVISION OF THE SITC						
8	Miscellaneous manufactured articles					
81	Prefabricated buildings; sanitary, plumbing, heating and lighting fixtures and fittings, n.e.s.	62	56	62	0.4	575 529
82	Furniture, parts thereof; bedding, mattresses, mattress supports, cushions and similar stuffed furnishings	236	194	196	1.3	2 021 1 800
83	Travel goods, handbags and similar containers	65	56	58	0.4	598 541
84	Articles of apparel and clothing accessories	261	507	510	3.3	3 828 3 362
85	Footwear	84	136	122	0.8	1 017 908
87	Professional, scientific and controlling instruments and apparatus, n.e.s.	384	322	369	2.4	3 333 3 028
88	Photographic apparatus, equipment and supplies and optical goods, n.e.s., watches and clocks	129	97	96	0.6	1 039 954
89	Miscellaneous manufactured articles, n.e.s.	743	768	681	4.5	7 786 6 923
	<i>Total Miscellaneous manufactured articles</i>	<i>1 964</i>	<i>2 136</i>	<i>2 093</i>	<i>13.7</i>	<i>20 197 18 048</i>
9	Commodities and transactions not classified elsewhere in the SITC					
93	Special transactions and commodities not classified according to kind	3	3	4	—	39 26
95	Gold coin whether or not legal tender, and other coin being legal tender	1	—	1	—	4 6
96	Coin (excl. gold coin), not being legal tender	—	—	—	—	— 1
97	Gold, non-monetary (excl. gold ores and concentrates)	729	414	522	3.4	8 488 4 599
98	Combined confidential items excl. some of SITC 280 (exports only) and some of SITCs 510 and 520 (imports only)	596	541	235	1.5	3 411 3 531
	<i>Total Commodities and transactions not classified elsewhere in the SITC</i>	<i>1 330</i>	<i>958</i>	<i>763</i>	<i>5.0</i>	<i>11 942 8 163</i>
	Total merchandise imports	17 630	15 381	15 293	100.0	155 535 133 605
	Balance of Payments Adjustments	279	282	299	..	2 151 1 727
	Goods Debits (imports) on a Balance of Payments Basis	17 909	15 663	15 592	..	157 686 135 332

.. not applicable
 — nil or rounded to zero (including null cells)

(a) Some SITC sections and divisions exclude commodities subject to a confidentiality restriction. These are included in Division 98. For more information see paragraph 26 of the Explanatory Notes.

(b) Per cent of total merchandise is calculated for the most recent month.

	EXPORTS				IMPORTS(b)				BALANCE OF MERCHANDISE TRADE	
	2008-09	Feb	8 months	8 months	2008-09	Feb	8 Months	8 Months	2008-09	8 Months
		2010	February	ended		ended	2010	February		Ended
	\$m	\$m	\$m	\$m	\$m	\$m	\$m	\$m	\$m	\$m
Belgium	1 301	59	1 090	633	1 719	117	1 265	1 063	-418	-429
Brazil	1 483	100	1 194	716	1 041	36	857	386	442	330
Canada	1 557	78	1 073	809	2 437	125	1 873	1 146	-880	-337
China	39 325	3 192	24 076	26 876	37 044	2 790	25 967	24 693	2 281	2 183
Denmark	176	10	119	90	1 070	137	740	798	-894	-708
Egypt(c)	453	22	261	252	33	1	25	19	420	233
Fiji	374	29	266	206	160	13	107	104	215	102
Finland	595	32	497	188	978	52	718	429	-383	-242
France	1 721	61	1 254	656	4 653	292	3 322	2 648	-2 932	-1 993
Germany	2 197	78	1 639	898	11 106	731	7 734	6 991	-8 909	-6 092
Hong Kong (SAR of China)	3 192	267	2 123	1 753	1 424	95	1 023	792	1 768	961
India	15 425	1 178	10 196	10 000	2 114	149	1 382	1 246	13 311	8 755
Indonesia	4 295	335	2 848	2 781	5 039	428	3 513	3 154	-744	-373
Iran	661	15	338	92	95	5	85	73	567	20
Iraq	194	3	100	167	31	—	31	—	163	167
Ireland	134	9	96	75	2 399	170	1 565	1 509	-2 265	-1 434
Israel	262	7	183	112	715	45	544	373	-453	-262
Italy	1 556	73	1 246	601	5 338	337	3 732	3 223	-3 783	-2 622
Japan	52 768	2 838	40 378	23 082	17 842	1 503	12 299	11 537	34 926	11 545
Korea, Republic of	19 274	1 139	14 075	9 789	6 523	551	4 229	4 495	12 751	5 294
Kuwait	428	42	303	354	426	42	316	255	2	99
Malaysia	3 730	187	2 642	1 994	8 335	550	6 041	5 265	-4 605	-3 271
Mexico	902	41	597	515	1 324	91	910	782	-422	-267
Netherlands	3 202	177	2 627	1 184	1 771	93	1 256	931	1 431	253
New Zealand	8 549	663	5 976	5 365	7 050	584	4 945	4 496	1 500	869
Pakistan	478	66	280	401	181	13	119	96	296	306
Papua New Guinea	1 611	166	1 066	1 312	3 013	266	2 067	2 009	-1 402	-698
Philippines	1 409	65	1 081	695	605	38	432	302	804	393
Saudi Arabia	2 250	158	1 602	957	935	49	681	319	1 315	638
Singapore	5 522	335	3 745	3 437	13 445	746	10 206	6 953	-7 923	-3 516
South Africa	2 056	131	1 598	1 072	1 258	97	958	661	798	411
Spain	612	22	503	274	1 731	118	1 252	1 110	-1 119	-837
Sweden	566	30	463	227	2 441	145	1 662	1 340	-1 875	-1 113
Switzerland	660	15	355	158	2 481	171	1 669	1 529	-1 821	-1 371
Taiwan	8 126	454	5 891	3 999	4 089	306	3 064	2 284	4 037	1 715
Thailand	4 951	468	3 313	3 203	10 749	777	7 749	7 951	-5 799	-4 748
Turkey	811	12	654	166	507	37	352	300	304	-134
United Arab Emirates	3 604	163	2 952	1 274	1 924	182	1 268	1 547	1 680	-273
United Kingdom	11 509	240	8 261	3 276	9 024	564	6 715	3 907	2 484	-632
United States of America	11 600	742	8 488	6 212	25 334	1 600	17 661	14 055	-13 734	-7 842
Viet Nam	1 234	89	747	899	4 402	249	3 223	1 924	-3 168	-1 025
Other Countries(b)	10 070	723	7 283	5 380	16 697	1 000	11 976	10 905	-6 626	-5 524
Total	230 829	14 516	163 481	122 130	219 485	15 293	155 535	133 605	11 344	-11 475
APEC	169 417	11 130	119 170	93 324	151 755	10 867	107 608	94 034	17 663	-711
ASEAN	21 286	1 489	14 471	13 104	43 640	2 838	32 059	26 224	-22 354	-13 120
Developing Countries	124 497	8 847	83 741	73 996	106 794	7 606	76 269	67 502	17 703	6 493
Least Developed Countries	2 144	151	1 359	1 192	281	23	151	178	1 862	1 014
European Union(d)	24 043	830	18 123	8 350	45 402	2 940	32 203	25 595	-21 358	-17 245
OECD	120 069	6 364	89 637	54 423	110 059	7 694	76 922	64 602	10 010	-10 178

— nil or rounded to zero (including null cells)

(a) See Time series spreadsheets for details of all countries.

(b) From September 2008 imports data with confidentiality restrictions 'no commodity details' or 'no value details' are included in Other countries.

(c) Exports of Alumina to Egypt are excluded from country total and included in the 'Other Countries' category.

(d) The European Union includes 27 member countries.

	8 MONTHS ENDED FEBRUARY			
	2008-09	Feb 2010	2009	2010
	\$m	\$m	\$m	\$m
EXPORTS (a)				
New South Wales	38 777	2 484	27 371	20 019
Victoria	20 375	1 510	14 188	11 693
Queensland	56 553	2 622	41 376	26 068
South Australia	9 527	595	6 601	5 101
Western Australia	86 880	5 935	60 985	48 450
Tasmania	3 511	245	2 345	1 823
Northern Territory	6 292	472	4 557	3 275
Australian Capital Territory	11	—	6	4
State not available for publication(b)	797	20	638	326
Re-exports	8 105	632	5 414	5 370
Total	230 829	14 516	163 481	122 130
IMPORTS				
New South Wales	78 994	5 716	54 615	49 709
Victoria	56 457	4 077	40 405	34 786
Queensland	33 972	2 424	24 707	20 411
South Australia	6 867	490	4 931	4 267
Western Australia	33 123	2 036	23 729	18 350
Tasmania	956	35	709	513
Northern Territory	4 347	279	3 136	2 034
Australian Capital Territory	7	—	6	3
State not available for publication(c)	4 761	235	3 296	3 531
Total	219 485	15 293	155 535	133 605

— nil or rounded to zero (including null cells)

(a) State in which the final stage of production or manufacture occurs.

(b) Exports of Alumina to Bahrain, Egypt and Iceland are excluded from the state totals and included in 'State not available for publication'.

(c) From September 2008 imports data with confidentiality restrictions 'no commodity details' or 'no value details' are included in State not available for publication.

PERIOD AVERAGE EXCHANGE RATES(a), Per Australian dollar

<i>Period</i>	<i>United States dollar</i>	<i>UK pound sterling</i>	<i>Euro</i>	<i>Japanese yen</i>	<i>Special Drawing Right</i>	<i>Trade-weighted index of value of the A\$(b)</i>
FINANCIAL YEAR						
2006-07	0.7863	0.4066	0.6018	93.21	0.5251	64.8
2007-08	0.8968	0.4479	0.6099	98.63	0.5664	69.7
2008-09	0.7456	0.4621	0.5414	73.99	0.4869	60.2
MONTHS						
2008						
December	0.6690	0.4480	0.4973	61.02	0.4407	54.6
2009						
January	0.6784	0.4678	0.5095	61.37	0.4478	55.4
February	0.6490	0.4503	0.5074	59.97	0.4386	54.2
March	0.6646	0.4680	0.5093	64.92	0.4483	56.0
April	0.7122	0.4846	0.5398	70.24	0.4773	59.1
May	0.7626	0.4954	0.5596	73.72	0.5022	61.7
June	0.8023	0.4898	0.5721	77.39	0.5194	64.2
July	0.8040	0.4913	0.5709	75.96	0.5180	64.0
August	0.8344	0.5047	0.5852	79.15	0.5349	66.0
September	0.8611	0.5275	0.5915	78.74	0.5461	67.2
October	0.9090	0.5613	0.6130	82.03	0.5716	70.0
November	0.9202	0.5540	0.6166	82.04	0.5754	70.6
December	0.9028	0.5552	0.6174	80.89	0.5693	69.6
2010						
January	0.9148	0.5659	0.6400	83.49	0.5842	70.7
February	0.8863	0.5663	0.6474	79.99	0.5759	69.2

(a) These exchange rates and the trade-weighted index are derived using rates provided by the Reserve Bank of Australia in respect of each trading day.

(b) May 1970 = 100. The Trade-weighted index is reweighted annually on 1 October and on special occasions as required.

	2006-07	2007-08	2008-09	Aug 2009	Sep 2009	Oct 2009	Nov 2009	Dec 2009	Jan 2010
	\$m	\$m	\$m	\$m	\$m	\$m	\$m	\$m	\$m
BALANCE									
On goods and services	—	—	-339	84	92	34	39	181	-83
CREDITS									
Total goods and services	—	—	-393	43	51	-25	-9	77	-80
<i>Total goods</i>	—	—	—	41	51	49	78	148	-35
Rural goods	—	—	—	17	16	2	-2	-25	-20
Non-rural goods	—	—	—	26	33	59	92	188	-1
Net exports of goods under merchandising	—	—	—	-2	1	-12	-12	-12	-8
Non-monetary gold	—	—	—	—	1	—	—	-3	-6
<i>Total services</i>	—	—	-393	2	—	-74	-87	-71	-45
DEBITS									
Total goods and services	—	—	54	41	41	59	48	104	-3
<i>Total goods</i>	—	—	59	2	2	76	75	88	25
Consumption goods	—	—	—	-1	1	2	3	2	—
Capital goods	—	—	—	-1	—	-4	—	-1	3
Intermediate and other merchandise goods	—	—	59	4	1	78	72	87	22
Non-monetary gold debits	—	—	—	—	—	—	—	—	—
<i>Total services</i>	—	—	-5	39	39	-17	-27	16	-28

— nil or rounded to zero (including null cells)

(a) This table is presented consistent with BPM6 sign conventions. This means for the balance on goods and services a negative revision indicates a decrease in a surplus or an increase in a deficit. For debits a negative revision indicates an increase in debits while a positive revision indicates a decrease in debits.

EXPLANATORY NOTES

INTRODUCTION

1 This publication presents preliminary estimates of Australia's international trade in goods and services on a balance of payments basis (Tables 1–11 and 17) and merchandise import and export statistics on a recorded trade basis (Tables 12–15). In addition, Table 16 Exchange rates and trade-weighted indexes are derived by using exchange rates and indexes provided by the Reserve Bank.

2 Merchandise trade statistics on a recorded trade basis are compiled from information submitted by exporters and importers or their agents to the Australian Customs and Border Protection Service (Customs and Border Protection). Adjustments for coverage, timing and valuation are made to recorded trade data to convert them to a balance of payments basis. The services data are sourced from the quarterly Survey of International Trade in Services and a range of administrative data and indicator series.

3 More comprehensive quarterly estimates of Australia's trade in goods and services, together with comprehensive details of Australia's balance of payments are included in the quarterly publication, *Balance of Payments and International Investment Position, Australia* (cat. no. 5302.0). Detailed monthly statistics on merchandise trade are available in Time Series Spreadsheets on the ABS website or by subscription to tailored services. More information on the *International Trade in Services by country, by state and by detailed services category* are available on a financial year basis (cat. no. 5368.0.55.003) with the September issue of this publication and calendar year basis (cat. no. 5368.0.55.004) with the March issue of this publication.

CONCEPTS, SOURCES AND METHODS

4 The conceptual framework used in compiling Australia's merchandise trade statistics can be found in *International Merchandise Trade, Australia: Concepts, Sources and Methods, 2001* (cat. no. 5489.0).

5 The conceptual framework used in compiling Australia's balance of payments statistics is based on the *International Monetary Fund's Balance of Payments and International Investment Position Manual Sixth Edition* (BPM6). Descriptions of the underlying concepts and structure of the balance of payments and the sources, methods and terms used in compiling the estimates are presented in *Balance of Payments and International Investment Position, Australia: Concepts, Sources and Methods, 1998* (cat. no. 5331.0). The current version of this document reflects the international standards prior to BPM6. A revised Concepts, Sources and Methods publication is scheduled for release in late 2010. The *Information paper: Implementation of new international statistical standards in the ABS National and International Accounts, September 2009* (cat. no. 5310.0.55.002) describes the key changes introduced with BPM6.

6 To bring merchandise trade statistics on a recorded trade basis to a balance of payments basis, timing adjustments are made to ensure that the transaction is recorded in the period in which ownership changed, rather than in the period in which the transaction was recorded by Customs and Border Protection or the period in which the goods arrived in/departed from an Australian port. Adjustments are also made to account for the change of ownership of goods not included in merchandise trade statistics. Chapter 6 of cat. no. 5331.0 provides more detail on the relationship between statistics on international merchandise trade on a recorded trade basis and on a balance of payments basis.

7 Recorded trade exports data presented for recent months in tables 12–15 of this publication are based on information initially reported by exporters to Customs and Border Protection. At the time of initial reporting to Customs and Border Protection the final prices may not be known for some commodities. Therefore, the information recorded for recent months for commodities like iron ore and coal can include a variety of prices including previous or current contract prices and the prevailing spot prices. Newly negotiated contract prices may not be fully reflected in the data first reported to

EXPLANATORY NOTES *continued*

CONCEPTS, SOURCES AND METHODS *continued*

Customs and Border Protection, and to compensate for this, the Balance of Payments series may reflect adjusted price levels.

8 The Concepts, Sources and Methods publications and information papers are available to download for free from the ABS website. Select *Statistics*, then select *By Catalogue Number*, and then the catalogue numbers as above.

CLASSIFICATIONS

9 The merchandise trade data on a recorded trade basis are presented using the following commodity classifications:

- the Harmonised System 2007 (available on request)
- the Standard International Trade Classification (SITC Revision 4)
- the Classification by Broad Economic Categories (BEC)
- the industry classification: Australian and New Zealand Standard Industrial Classification, 2006 (ANZSIC 06) from July 2005.

10 The Balance of Payments Goods and Services series are presented according to three classifications with the goods classifications derived from SITC Revision 4 and BEC. The classifications are:

- for goods:
 - the Balance of Payments Commodities for Exports (BoPCE)
 - the Balance of Payments Broad Economic Categories for Imports (BoPBEC),
- for services:
 - the Extended Balance of Payments Services Classification (EBOPS).

ACCURACY, RELIABILITY AND REVISIONS

11 While every effort is made to ensure the accuracy and reliability of estimates, most series are subject to revision as more complete and accurate information becomes available. Care should be exercised in the use and interpretation of estimates in this publication. The transactions occurring in international trade in goods and services are of many different kinds, and therefore the compilation of trade estimates entails the use of a very wide range of statistical data of varying degrees of accuracy and timeliness. For further information on the monthly services series, see paragraph 25.

12 The revisions are applied differently for merchandise trade and Balance of Payments series. Each month, merchandise trade data are revised for the previous six months to incorporate latest available data.

13 For the Balance of Payments Goods and Services series, in original terms, no revisions are applied in the July, October, January or April issues. This is to ensure the monthly series align with the comparable series in the quarterly publication. In the September issue revisions can be applied to the four previous financial years. In other issues revisions can be applied to the previous and current financial years to incorporate the latest available survey and administrative data.

14 In seasonally adjusted and trend terms, revisions may occur at any time point but tend to focus on the most recent estimates. Please also refer to paragraphs 17 (seasonal adjustment) and 19 (trend estimates) below.

SIGN CONVENTION

15 In keeping with BPM6 conventions, balance of payments basis credit entries are shown with an implied positive sign and debit items are shown as negative entries. For statistics on a recorded trade basis, both imports and exports are shown without sign. The calculation of percentage changes on balance of payments debit items are made without regard to sign. References to balance of payments debit items in Key Figures, Key Points, and Analysis and Comments are also made without regard to sign.

SEASONALLY ADJUSTED AND TREND ESTIMATES

16 The estimates of international trade in goods and services on a balance of payments basis are seasonally adjusted, however the merchandise exports and imports statistics on a recorded trade basis are not. Monthly original estimates are volatile, being subject to calendar-related and large irregular influences. Seasonally adjusted estimates are derived

EXPLANATORY NOTES *continued*

SEASONALLY ADJUSTED AND TREND ESTIMATES *continued*

by estimating and removing from the original series systematic calendar related effects, such as seasonal (e.g. Christmas), trading day and moving holiday (e.g. Easter) influences. Seasonal adjustment does not aim to remove the irregular or non-seasonal influences which may be present in any particular month. These irregular influences may reflect both random economic events and difficulties of statistical recording.

17 The seasonally adjusted statistics in this publication use the concurrent seasonal adjustment technique and Autoregressive Integrated Moving Average (ARIMA) modelling to estimate factors for the current and previous months. Under concurrent seasonal adjustment, the estimates of seasonal factors are fine tuned as new or revised original estimates become available each period. The seasonally adjusted estimates are subject to revisions at each reference month as the estimates of seasonal factors are improved.

18 ARIMA modelling relies on the characteristics of the series being analysed to project future period data. ARIMA modelling is used on a case-by-case basis where it results in reduced revisions to seasonally adjusted series when subsequent data become available. The projected values are temporary, intermediate values, that are only used internally to improve the estimation of the seasonal factors. The projected data do not affect the original estimates and are discarded at the end of the seasonal adjustment process. The ARIMA model is assessed as part of the annual review and, following the 2009 annual review, 40 of the 45 directly seasonally adjusted trade in goods and services time series use an ARIMA model.

19 The month-to-month movements of the seasonally adjusted estimates may not be reliable indicators of underlying behaviour because they include irregular or non-seasonal movements. Trend estimates reduce the effect of these movements as they are derived by applying a 13-term Henderson moving average to the seasonally adjusted series. The 13-term Henderson moving average (like all Henderson averages) is symmetric, but as the end of a time series is approached, asymmetric forms of the average are applied. While the asymmetric weights enable trend estimates for recent months to be produced, it does result in revisions to the estimates for the most recent six months as additional observations become available. Revisions to trend estimates can also occur because of revisions to the original data and as a result of the re-estimation of the seasonal factors. Trend estimates should be used with caution, especially around the time of unusual influences, until these have been appropriately taken into account.

20 Information papers and articles on time series methods are available on the ABS website:

- for seasonal adjustment methods, see *Information Paper: An Introductory Course on Time Series Analysis, Jan 2005* (cat. no. 1346.0.55.001) and *Time Series Analysis Frequently Asked Questions, 2003* (cat. no. 1346.0.55.002)
- for ARIMA modelling, see *Feature article: Use of ARIMA modelling to reduce revisions* in the October 2004 issue of *Australian Economic Indicators* (cat. no. 1350.0)
- for trend estimates methods, see *Information Paper: A Guide to Interpreting Time Series – Monitoring Trends* (cat. no. 1349.0)
- alternatively contact the Assistant Director, Time Series Analysis on (02) 6252 6345 or e-mail <time.series.analysis@abs.gov.au>.

ECONOMIC TERRITORY

21 In accordance with BPM6 definitions, Australia's economic territory, on a balance of payments basis, is the area under the effective control of the Australian government. It includes the land area, airspace, territorial waters, including jurisdiction over fishing rights and rights to fuels and minerals. Australian economic territory also includes territorial enclaves in the rest of the world. These are clearly demarcated areas of land, located in other countries and which are owned or rented by the Australian government

EXPLANATORY NOTES *continued*

ECONOMIC TERRITORY

continued

for diplomatic, military, scientific or other purposes. Specifically, the economic territory of Australia consists of:

- Geographic Australia which includes Cocos (Keeling) Islands and Christmas Island;
- Norfolk Island;
- Australian Antarctic Territory;
- Heard Island and McDonald Islands;
- Territory of Ashmore Reef and Cartier Island;
- Coral Sea Islands;
- Australia's territorial enclaves overseas; and
- the Joint Petroleum Development Area (joint territory between Australia and East Timor (Timor-Leste)).

22 Because of administrative complexities and measurement difficulties, Norfolk Island transactions with the rest of the world will not always be captured in all relevant Balance of Payments statistics. Most of the transactions involving Norfolk Island are not material to Australia's trade performance and not capturing these transactions will not distort these statistics. However, any significant transactions will be identified and included in the relevant statistics.

COMMODITY BREAKDOWN OF GOODS

23 For details of the classifications used to present goods exports (credits) and imports (debits) on a balance of payments basis, see tables 6.6 and 6.7, respectively, in *Balance of Payments and International Investment Position, Australia: Concepts, Sources and Methods*, 1998 (cat. no. 5331.0).

24 The recorded trade statistics shown in tables 12 and 13 are classified by the Standard International Trade Classification (SITC). Imports and exports of goods at a more detailed level are available from the Time Series spreadsheets on the ABS website. All data from July 2005 are presented according to SITC Rev 4 and data prior to July 2005 are presented according to SITC Rev 3. For details refer to the 'Classifications and Standards Update' in the July 2008 issue of this publication.

MONTHLY SERVICES SERIES

25 Monthly indicators for many of the services components that are only surveyed quarterly are not available. Monthly estimates for the freight and other transportation components of services credits in table 9 are derived by dividing the quarterly estimate by three. Freight debits are derived directly from imports data for the reference month as a difference between total merchandise cost, insurance and freight (CIF) and free on board (FOB), adjusted to reflect timing and processing adjustments. For freight credits and other transportation credits and debits, estimates are derived by extrapolating the last quarter's data by an average of movements for the same quarter over the three previous years, and then dividing the estimate by three. Similarly other services estimates are derived by extrapolating the last quarter's data by an average of movements for the same quarter over the previous three years, and then dividing the estimate by three.

CONFIDENTIALITY OF MERCHANDISE TRADE STATISTICS

26 The release of statistics for certain merchandise trade commodities is restricted in order to prevent the identification of the activities of an individual business, where this is requested by the business concerned. These restrictions do not affect the total value of exports and imports, but they can affect statistics at the country, state and commodity levels. Imports data that have the confidentiality restrictions 'No commodity details' or 'No value details' are aggregated into a single confidential commodity code. For data prior to September 2008, these data are added back into the appropriate state total and country total (i.e. these totals show the correct level of trade). From September 2008 these confidential data are not added back. Instead the confidential data are published as 'No country details' in the country totals and 'State not available for publication' in the state totals. Therefore, country and state totals from September 2008 may not represent the actual amount of trade in each country/state but only the trade in commodities without a 'No commodity details' or 'No value details' restriction. For information on the

EXPLANATORY NOTES *continued*

CONFIDENTIALITY OF MERCHANDISE TRADE STATISTICS *continued*

confidentiality restrictions applied to the merchandise trade statistics in this publication, refer to the current issue of *International merchandise trade: Confidential Commodities List (CCL)* (cat. no. 5372.0.55.001).

TOURISM RELATED SERVICES

27 The tourism related services memorandum items provide timely indicators of the movements in tourism related activities, not an absolute measure of the level of these activities. The tourism related indicator has been derived by combining total travel services (business, education-related and other personal travel) and passenger transportation services (which includes agency fees and commissions for air transport).

SERVICES BY STATE AND BY PARTNER COUNTRY

28 Annual services data by state, by country and detailed services are released twice yearly. Calendar year data are usually released with the March issue of this publication and financial year data are usually released with the September issue. Refer to Time series data for details.

29 Services credits are classified by the state of provision, while services debits are classified by the state of consumption. The state allocations for transportation, travel, postal and courier, and telecommunication services are based on a number of indicators including merchandise trade statistics by state, overseas passenger arrivals and departures by state of clearance and data provided by the Department of Immigration and Citizenship. The allocation for other services (about 25% of all trade in services) is primarily based on the location of the business reporting the information, which serves as a proxy for the state of provision/consumption of that service. The data should be used with care but are considered suitable for analysis over time.

30 A comprehensive explanation of the data sources used and the methodology applied in the compilation of partner country statistics is provided in Chapter 17 of *Balance of Payments and International Investment Position, Australia – Concepts, Sources and Methods* (cat. no. 5331.0). Approximately 7% of total services credits and 5% of total services debits for both 2007–08 and 2008–09 were either confidential, or unable to be allocated to individual countries.

ABS DATA AVAILABLE

31 More detailed balance of payments and recorded merchandise trade data, including forward seasonal factors are available as time series spreadsheets or data cubes from the ABS website. Merchandise trade data by commodity, country and state that are not on the ABS website may be available on request. Inquiries should be made to the National Information and Referral Service as shown on the back of this publication.

RELATED PRODUCTS AND PUBLICATIONS

32 Users may also wish to refer to the following publications which can be downloaded free of charge from the ABS website by using the 'Statistics' tab and selecting the relevant catalogue number:

- *Balance of Payments and International Investment Position, Australia* (cat. no. 5302.0) – issued quarterly
- *International Merchandise Imports, Australia* (cat. no. 5439.0) – issued monthly
- *International Trade Price Indexes, Australia* (cat. no. 6457.0) – issued quarterly
- *Balance of Payments and International Investment Position, Australia: Concepts, Sources and Methods* (cat. no. 5331.0)
- *Information Paper: Quality of Australian Balance of Payments Statistics* (cat. no. 5342.0)
- *International Merchandise Trade, Australia: Concepts, Sources and Methods* (cat. no. 5489.0)
- *A Guide to Australian Balance of Payments and International Investment Position Statistics* (cat. no. 5362.0.55.001).

EXPLANATORY NOTES *continued*

RELATED PRODUCTS AND PUBLICATIONS *continued*

33 Current publications and other products released by the ABS are available from the Statistics tab on the ABS website. The ABS also issues a daily *Release Advice* on the website which details products to be released in the week ahead. A *foreign trade theme page* and a *balance of payments theme page* are available on the ABS website. Select *Topics @ a Glance – Economy – Foreign Trade* or *Balance of Payments*. This page provides direct links to all foreign trade and balance of payments related data and publications, recent changes and forthcoming events, links to relevant websites and a range of other information about the Australian International Accounts.

ROUNDING

34 Where figures have been rounded, discrepancies may occur between sums of the component items and totals. Percentage movements are calculated from data at the level of precision presented in this publication (i.e. \$m) except for international merchandise trade tables.

ABBREVIATIONS

\$b	billion (thousand million) dollars
\$m	million dollars
ABS	Australian Bureau of Statistics
APEC	Asia Pacific Economic Co-operation
ASEAN	Association of South-East Asian Nations
n.e.s.	not elsewhere specified
n.i.e.	not included elsewhere
OECD	Organisation for Economic Co-operation and Development
SAR	Special Administrative Region
SITC	Standard International Trade Classification

APPENDIX RELATED ARTICLES

<i>Article</i>	<i>Source(a)</i>	<i>Issue</i>
Investment		
Foreign ownership of equity	5302.0	Sep qtr 2007
Kangaroo bonds	1301.0	2006
Foreign currency exposure	5308.0	Mar qtr 2005
Gross external debt	5302.0	Sep qtr 2003
Balance of payments		
International comparison of balance of payments statistics	(b) 5363.0	1998–99
Merchandise trade		
Export and import invoice currencies, 2009	5368.0	Dec 2009
Characteristics of Australian Exporters	5368.0.55.006	2007–08
100 years of international trade statistics	5368.0	Oct 2007
New methodology for deriving counts of Australian exports	5368.0	Feb 2006
Australia's Importers, 2003–04	5368.0	Nov 2004
Australia's Exporters, 2003–04	5368.0	Oct 2004
Australia's trade with the USA	5368.0	Mar 2004
Foreign ownership of Australian exporters and importers	5496.0.55.001	2002–03
Major commodities traded by Australia, 1991 to 2000	(b) 5422.0	Dec qtr 2000
Trade in services		
International trade in services by partner country, 2006, preliminary	5368.0	Dec 2006
Changes to International trade in services statistics, August 2006	5368.0	Aug 2006
Changes to International trade in services travel statistics	5368.0	Aug 2005
Finance		
Impact of the farm season on Australian production in 2002–03 and 2003–04	1301.0	2005
Recent trends in construction and first home buyers finance	5609.0	Mar 2002
Household sector data in the financial accounts	5232.0	Mar qtr 2002
Technical information		
Implementation of new international statistical standards in ABS National and International Accounts, September 2009	5310.0.55.002	Oct 2009
Estimation of Workers' Remittances based on Balance of Payments and International Investment Position Manual, Sixth Edition	5302.0.55.003	Sep 2009
Impact of revised international standards on monthly International Trade in Goods and Services	5368.0.55.014	Aug 2009
Changes to International Trade in Goods Statistics - Countries and Ports	5368.0.55.013	Jul 2009
Revisions to international standards in quarterly Balance of Payments and International Investment Position statistics from September 2009	5302.0.55.002	2009
Revisions to international standards in monthly international trade in goods and services statistics from August 2009	5368.0.55.012	2009
Changes to International Trade in Goods Industry Statistics, July 2009	5368.0.55.011	Dec 2008
Technical note 1 - Income on debt	5302.0	Jun qtr 2008
Technical note 2 - Use of CDI data	5302.0	Jun qtr 2008
Impact of introducing Revision 4 of the Standard International Trade Classification	5368.0.55.010	2008
Changes to international trade statistics July 2008	5368.0.55.009	2007–08
Introduction of revised international standards in ABS economic statistics in 2009	5310.0.55.001	2007
Changes on 1 January 2007 to Statistical Codes in the AHECC and the Customs Tariff	1233.0.55.001	Nov 2006
ABS implementation in January 2007 of revisions to international trade classifications, 2007	5368.0.55.005	Jun 2006
Revised treatment of Goods for Processing in Merchandise Trade and Balance of Payments Statistics	5368.0	May 2006
Impact of Customs and ABS changes on import statistics from October 2005	5439.0	Oct 2005
ABS management of the impact of the implementation of the imports component of the New Customs System	5439.0	Aug 2005
Changes to country and port classifications	5368.0	May 2003
Implementation of New Customs Systems	5368.0	Aug 2004
The effect of customs changes on export statistics	5422.0	Jun qtr 2002
Data confidentiality	5422.0	Dec qtr 1999

- (a) In the ABS website home page, select Statistics; By Catalogue Number; and click on the specified catalogue number and issue. Note: in some instances, a particular issue of the publication can be found in the Past & Future Releases page of the catalogue.
- (b) This article can be found in pdf format by referring to the Downloads page of the specified issue of this publication on the ABS website.

FOR MORE INFORMATION . . .

INTERNET **www.abs.gov.au** the ABS website is the best place for data from our publications and information about the ABS.

INFORMATION AND REFERRAL SERVICE

Our consultants can help you access the full range of information published by the ABS that is available free of charge from our website. Information tailored to your needs can also be requested as a 'user pays' service. Specialists are on hand to help you with analytical or methodological advice.

PHONE 1300 135 070

EMAIL client.services@abs.gov.au

FAX 1300 135 211

POST Client Services, ABS, GPO Box 796, Sydney NSW 2001

FREE ACCESS TO STATISTICS

All statistics on the ABS website can be downloaded free of charge.

WEB ADDRESS www.abs.gov.au